

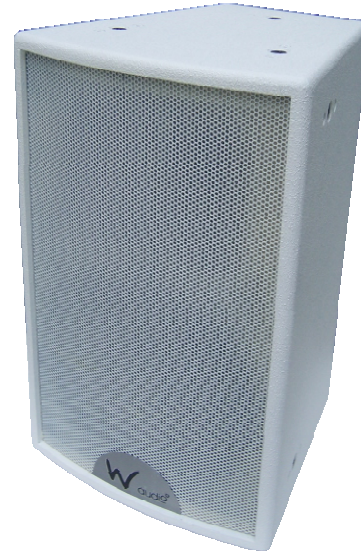
SR-10



Professional
Loudspeaker

Key Features:

- 10"/65mm Transducer
- 1.35" Voice Coil, 1" Exit Titanium Compression Driver
- 90°×80° Coverage Pattern
- Smooth Response With High Power Handling Capacity (Continuous Program/RMS), 250W/1000W
- 16 Integral Suspension Points
- Complete Mounting Solutions



General Description and Applications:

The SR 10 is a full range, two way passive speaker which is compact and lightweight but provides a very high output along with a smooth and dynamic reproduction. The cabinet features M10 mounting points for horizontal or vertical installation.

The cabinet can be used as a main speaker in small, near field applications or as a fill/delay element in bigger systems. The wide coverage angle and the true constant directivity of the newly designed horn makes coverage of large audiences easy, the crossover design guarantees the perfect pattern matching of woofer and compression driver, avoiding secondary lobe creation.

Technical Specification:

Freq.Range(-10dB):	60Hz~20kHz
Freq.Response(-3dB):	80Hz~20kHz
Rec.Hipass Frequency:	50Hz
Axial Sensitivity:	95dB(1W/1m)
Max Calculated SPL:	125dB
Horizontal Coverage:	90°
Vertical Coverage:	80°
Rated System Power:	250W Continuous 1000W Peak
LF Transducer:	10"/65mm
HF Transducer:	1"/34mm
Crossover Frequency:	2.5kHz
Nominal Impedance:	8 Ohms
Connector:	2×NL4 Speakon
Dim (W×H×D):	309mm×485mm×320mm
Net Weight:	1.6Kg
Shipping Weight:	1.8Kg

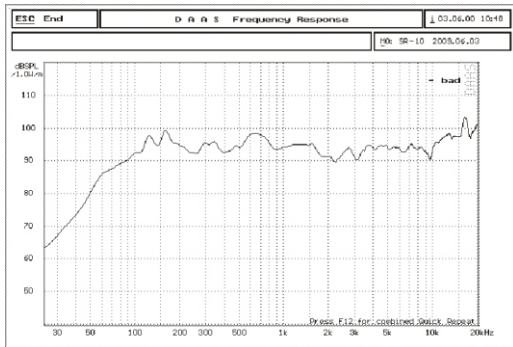


SR-10

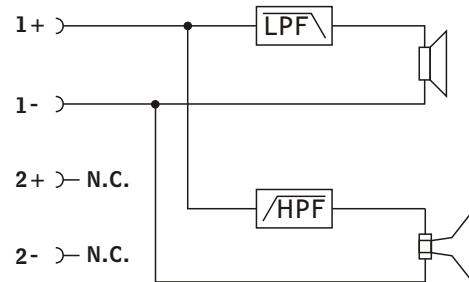


Professional
Loudspeaker

Frequency Response



Block Diagram



Dimension Drawings

