

TL-A220



Maximum height Altura máxima	5.5 m (18 ft)
Maximum load Carga máxima	220 kg (485 lbs)
Work surface Superficie de trabajo	2.1x1.6 m (6.9x5.2 ft)
Transport surface Medida transporte	0.49x0.49 m (1.6x1.6 ft)
Folded height Altura plegada	1.72 m (5.6 ft)
Weight Peso	116 kg (256 lbs)
Adaptor Adaptor	Forks 74.5cm (included)
Winch Winch	AL-KO 900 kg
Safety Safety	ALS (Auto Lock System)



ACCESSORIES FOR THIS MODEL



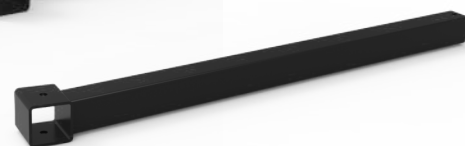
FAS-01



FAS-02



PR-01



BC-075L



PS-360



PS-1TR



PS-2TR



GS-PRO



RH-2