

INFINITY *Signature* SERIES  
TRADITION REDEFINED



PRECISION EXCELLENCE CRAFTSMANSHIP

PROFESSIONAL THEATRE FIXTURES



*Spirit of*  
  
∞ infinity

INFINITY *Signature* SERIES  
TRADITION REDEFINED



Designing and developing LED-based theatre fixtures which would complement or even replace conventional Tungsten luminaires has always been a challenge. With Robert Juliat's knowhow and experience, Infinity had the opportunity to engineer and build the Infinity Signature Series. A range of theatre fixtures with state-of-the-art technology, seven colour LED engines, perfect Tungsten simulation modes, flicker free crossfades, unique dimming software, and energy efficient designs makes them the perfect LED-based luminaires that make no concessions when it comes to quality of light.

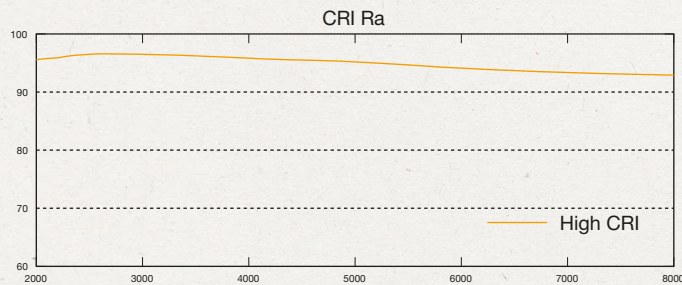
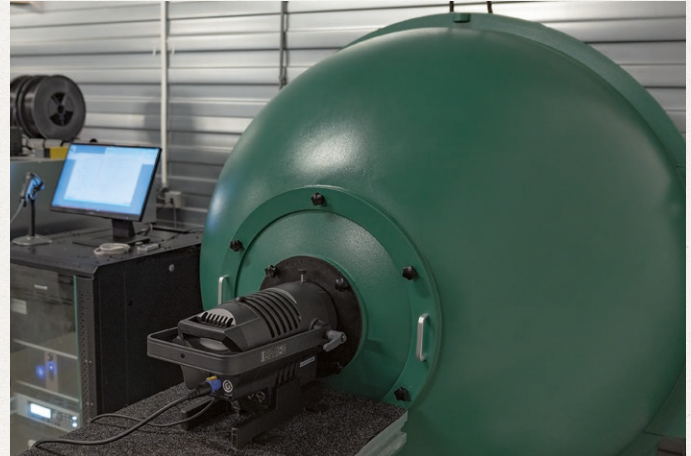




## LED THEATRE LUMINAIRES

### Calibration

To make sure that the output and the brightness remain steady and to guarantee that they stay the same between different production-runs, the Infinity Signature Series have various calibration systems on-board. One such system is Linearity calibration for differences in the electronics, which makes sure that the output and the colour temperature remain constant. Another system is Temperature drift, which compensates for the changes in brightness and wave length of the LEDs as the temperature of the LED changes. The final example of a calibration system is Optics Colour Shift compensation, which takes into account any differences in colour rendering.



### CRI

The Colour Rendering Index or CRI puts a value on the quality of light, with a CRI of 100 representing the index for perfect light. The higher the CRI value, the higher the light source's ability to show object colours realistically. This is a particularly important characteristic in theatrical and TV applications. The CRI index for the Infinity Signature fixtures starts at 95. For the coloured theatre engines, the CRI index is guaranteed to be higher than 96, even over the entire CCT range.



# INFINITY *Signature* SERIES

## TRADITION REDEFINED



### Silence

The Infinity Signature Series is well equipped to be used in television-studios, because of the adjustable PWM modulation to avoid rolling shutter and because they are extremely quiet. These fixtures must provide steady, consistent, and reliable light output. Their effect needs to be seen but not heard. That is why the Infinity Signature luminaires are equipped with a sophisticated cooling system, offering three operational modes: Auto, Silent, and Full. Based on where the fixtures are and what they are used for, one of these three options can be chosen for the ideal performance.

### Dimming

The Infinity Signature intelligent theatre luminaires are equipped with 16-bit internal dimming which ensures smooth dimming. If a DMX controller operates at 8-bit, the fixtures are smart enough to interpolate between the 8-bit source and the 16-bit internal dimmer and create dimming without any visible steps. The second important feature, especially for television applications and camera-purposes in general, is the adjustable PWM in steps of 10Hz: a tool that eliminates rolling shutter and is flicker free under any circumstances.





## LED THEATRE LUMINAIRES

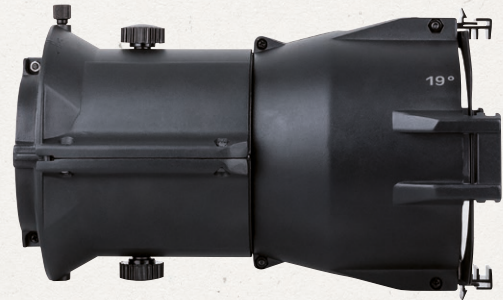


### Intelligence inside

The Infinity Signature theatre spots are user-friendly and easy to operate. All measurements and calculations are integrated into each unit. Even with a basic 8-bit fader desk, a smooth step-less dimming is possible. All calibration systems to ensure a steady output and a constant colour are on-board and the 64 spectrum-matching colour-gels are available as well (seven-colour Light source only). There is no need for an expensive light console to get the best possible result. All functionalities and settings can be set from your desk because all Signature fixtures are RDM-protocol equipped. This RDM protocol gives.

### Lenses

To ensure the Signature engines provides perfect output, lenses are needed. Both standard and High Definition-lenses are available. If a lighting situation requires more precise optics for projecting images or gobos or you simply need an extremely well-defined beam, then the HD-lens comes into play. All Signature engines are compatible with ETC-lenses and with most of the regular lenses that are available. Another practical tool is the Selecon optics lens adapter, specifically for SPX and Pacific, with which the Selecon lenses can be attached to the Signature bodies.







## TS-260C7 PROFILE ENGINE

### 200010 Body without lens

Being able to produce perfectly calibrated colours by using a 7 colour Lumiled LED engine is the big advantage of the TS-260C7 Profile engine. Infinity combined 64 of the most used theatrical colours into a built-in virtual stroller. Add to this a CRI value which is consistently higher than 96 over the entire CCT range and the TS-260C7 becomes a formidable addition to any application where different moods in a high quality of light is needed. Equipped with 7 different DMX modes finding the right operation modus is no issue.



### Features

- Delivers the performance of a 750W Tungsten Halogen unit
- 260W Lumiled 7 colour LED engine using custom designed array
- CRI > 96 Consistently on full CCT range
- LED Colour Linearity Compensation
- LED Colour Temperature Drift Compensation (on all LEDs)
- Optics Colour Shift compensation
- Colour wheel with 64 spectrum matching Filter gels
- 2000 – 8000K Seamless CCT channel
- RGB, CMY and HSI Colour control
- 16 bit Intelligent high resolution virtual dimming
- Tungsten mode with natural colour drift & timing simulations
- Flicker-Free with selectable PWM by DMX
- RDM allowing for remote setting and recall of information
- Custom design silent cooling system
- 1CH DMX mode for conventional replacement



## Technical Specifications

### LED Engine

Source: 260W Lumiled 7 colour LED engine using custom designed array.

### Optical Information

Output: 4500lm  
Light quality: >96 CRI Consistently (High CRI Mode)  
Colour Temperature: 2000K ~ 8000K  
Beam Angles: 15°-35°, 25°-50°, 5°, 10°, 14°, 19°, 26°, 36°, 50° (optional)

### Electrical Specifications:

Voltage: 100 -240 volts AC.  
Frequency: 50/60 Hz  
Power Factor: 0,96  
Consumption: 260W max

### Environmental Specifications:

Ambient Temp: 0°C ~40°C (operating) / -10°C ~45°C (start-up)  
IP Rating: IP 20 indoor use only  
Conformity: CE Mark

### Control Specifications:

Control: On board Menu, RDM, DMX512  
Fan mode: Silent, Auto, Full  
DMX Channels: Dimmer Mode, 1Ch  
Basic Mode, 5Ch  
Tungsten Mode, 6Ch  
HSI Pro Mode, 10Ch  
RGB Pro Mode, 10Ch  
CMY Pro Mode, 10Ch  
RAW Mode, 20Ch

### Mechanical Specifications:

Power connections: Neutrik powerCON in- and through  
Data connections: Neutrik 3&5p DMX in- and through  
Gobo slot: B size, separate slot for diffuser or Iris  
Pole operated: Available as option

Construction: Machined Aluminium, sheet metal, moulded engineering grade plastics.

Colour: Black  
Dimensions: 468 x 323 x 457 mm  
Weight: 8,5Kg

## LED THEATRE LUMINAIRES







## TS-300 PROFILE ENGINE

### 200001 3200K Body without lens

Looking for fitting LED-based answers to conventional Tungsten challenges was more than enough motivation for Infinity to design the Signature series. The TS-300 Profile Engine is one of those answers. Built around a powerful, reliable 300W Lumiled LED engine with a colour temperature of 3200K and a high, consistent CRI of more than 96 it will match conventional 750W Tungsten fixtures perfectly. Various calibration systems inside the intelligent, intuitive software make sure that the TS-300 will fit in seamlessly in Tungsten setups. Very well equipped for theatre or TV-applications where a steady output, high quality of light and silent fan operation are not only required but actual necessities. The Infinity Signature TS-300 has the complete package.

### 200002 5700K Body without lens

For cinematic or TV-applications a different colour temperature is required. In these cases 5700K is the most commonly used colour temperature because it resembles daylight. The Infinity Signature TS-300 5700K will stay consistent, daytime or night time which offers the camera-operator more freedom to get the perfect shot. The energy efficient TS-300 produces not only a steady and perfectly calibrated, Tungsten-like 5700K but does this with a high CRI of over 95 constantly. The Silent Fan mode makes sure that the TS-300 is seen but not heard and issues like rolling shutter or obtaining a flicker free image can be set through the PWM feature. For film and video applications the logical choice.



### Features

- Delivers the performance of 750W Tungsten halogen unit
- 300W, 3200K / 5700 Custom designed Lumiled Engine
- CRI > 96 / 95 Consistently
- Consistent colour temperature regardless of intensity
- 16 bit Intelligent high resolution virtual dimming
- Factory calibrated
- RDM allowing for remote setting and recall of information
- Custom design silent cooling system
- Neutrik connections



## Technical Specifications

### LED Engine

Source: 300W Lumiled White LED engine using custom designed array.

### Optical Information

Output: 8300lm  
Light quality: >96 Consistently, 200001  
>95 Consistently, 200002  
Colour Temperature: 3200K  
Beam Angles: 15°-35°, 25°-50°, 5°, 10°, 14°, 19°, 26°, 36°, 50° (optional)

### Electrical Specifications:

Voltage: 100 -240 volts AC.  
Frequency: 50/60 Hz  
Power Factor: 0,97  
Consumption: 300W max

### Environmental Specifications:

Ambient Temp: 0°C ~40°C (operating) / -10°C ~45°C (start-up)  
IP Rating: IP 20 indoor use only  
Conformity: CE Mark

### Control Specifications:

Control: On board Menu, RDM, DMX512  
Fan mode: Silent, Auto, Full  
DMX Channels: Dimmer Mode, 1Ch  
Basic Mode, 2Ch  
Pro mode, 4Ch

### Mechanical Specifications:

Power connections: Neutrik powerCON in- and through  
Data connections: Neutrik 3&5p DMX in- and through  
Gobo slot: B size, separate slot for diffusor or Iris  
Pole operated: Available as option  
Construction: Machined Aluminium, sheet metal, moulded engineering grade plastics  
Colour: Black  
Dimensions: 468 x 323 x457 mm

## LED THEATRE LUMINAIRES



INFINITY *Signature* SERIES  
TRADITION REDEFINED

&infinity





## TF-260C7 FRESNEL

**200203** 7 Colour Fresnel 260W LED

The Infinity Signature TS-260C7 fixture is perfectly equipped for theatre and film applications. Seamlessly choosing the right colour temperature, adding the perfectly calibrated colour out of the virtual stroller, cancelling out rolling shutter and built-in Tungsten simulations. All these features combined turn the TS-260C7 into the only fixture for any TV-application. Lighting larger areas in a specified colour is no issue for the TS-260C7 Fresnel. With RGB, CMY or HSI control the desired colour is at your fingertips without worrying about the best possible mix from the 7 colours source, intelligence is inside. The zoom focus mechanism is easy and intuitive, both manually and motorized by dmx applicable between 15°



### Features

- Delivers the performance of a 1kW Tungsten Halogen unit
- 260W Lumiled 7 colour LED engine using custom designed array
- CRI > 96 Consistently on full CCT range
- LED Colour Linearity Compensation
- LED Colour Temperature Drift Compensation (on all LEDs)
- Optics Colour Shift compensation
- Manual and motorized 15° -50° zoom control
- Colour wheel with 64 spectrum matching Filter gels
- 2000 – 8000K Seamless CCT channel
- RGB, CMY and HSI Colour control
- 16 bit Intelligent high resolution virtual dimming
- Tungsten mode with natural colour drift & timing simulations
- Flicker-Free with selectable PWM by DMX
- Custom design silent cooling system
- 1CH DMX mode for conventional replacement



## Technical Specifications

### LED Engine

Source: 260W Lumiled 7 colour LED engine using custom designed array.

### Optical Information

Output: 3500lm  
Light quality: >96 CRI Consistently  
Colour Temperature: 2000K ~ 8000K  
Beam Angles: 15°-50°

### Electrical Specifications:

Voltage: 100 -240 volts AC.  
Frequency: 50/60 Hz  
Power Factor: 0,97  
Consumption: 280W max

### Environmental Specifications:

Ambient Temp: 0°C ~40°C (operating) / -10°C ~45°C (start-up)  
IP Rating: IP 20 indoor use only  
Conformity: CE Mark

### Control Specifications:

Control: On board Menu, RDM, DMX512  
Fan mode: Silent, Auto, Full  
DMX Channels: Dimmer Mode, 1Ch  
Basic Mode, 6Ch  
Tungsten Mode, 7Ch  
HSI Pro Mode, 11Ch  
RGB Pro Mode, 11Ch  
CMY Pro Mode, 11Ch  
RAW Mode, 21Ch

### Mechanical Specifications:

Power connections: Neutrik powerCON in- and through  
Data connections: Neutrik 3&5p DMX in- and through  
Pole operated: Available as option  
Construction: Machined Aluminium, sheet metal, moulded engineering grade plastics.  
Colour: Black  
Weight: 8,3Kg

## LED THEATRE LUMINAIRES



INFINITY *Signature* SERIES  
TRADITION REDEFINED

&infinity





## TF-300 FRESNEL (lens not included)

### 200202 3200K Fresnel 300W LED

On any stage good lighting and the quality of light are almost obligatory. Equally important is the actual light placement. Which areas need to be highlighted and how. Should it be a razor-sharp and perfectly defined image or should it be evenly spread across the background? With the Signature Profile Engine you can accentuate very precisely. For a broader presentation the TS-300 Fresnel 3200K is the perfect choice, spreading an even warm white light around the stage. The zoom focus mechanism is easy and intuitive, both manually and motorized by dmx applicable between 15° to 50°.

### 200201 5700K Fresnel 300W LED

To get a more natural feel to any film or video the light used should be of the highest possible quality with a matching consistent colour temperature. Due to these two characteristics it is able to light areas without showing any overlap or set boundaries. With the Signature TF-300 5700K Fresnel version spreading daylight with a high CRI of over 95 is no issue. This high value is possible due to selecting Lumiled LEDs, extensive measuring and calibration of the unit and using intuitive software. The zoom focus mechanism is easy and intuitive, both manually and motorized by dmx applicable between 15° to 50°.



### Features

- Delivers the performance of 1kW Tungsten halogen unit
- 300W, 3200K / 5700K Custom designed Lumiled Engine
- Manual and motorized 15° -50° zoom control
- CRI > 96 / 95 Consistently
- Consistent colour temperature regardless of intensity
- 16 bit Intelligent high resolution virtual dimming
- Factory calibrated
- RDM allowing for remote setting and recall of information
- Custom design silent cooling system
- Neutrik connections



## Technical Specifications

### LED Engine

Source: 300W Lumiled White LED engine using custom designed array.

### Optical Information

Output: 5000lm

Light quality: >96 Consistently, 200202

>95 Consistently, 200201

Colour Temperature: 3200K

Beam Angles: 15°-50°

### Electrical Specifications:

Voltage: 100 -240 volts AC.

Frequency: 50/60 Hz

Power Factor: 0,97

Consumption: 300W max

### Environmental Specifications:

Ambient Temp: 0°C ~40°C (operating) / -10°C ~45°C (start-up)

IP Rating: IP 20 indoor use only

Conformity: CE Mark

### Control Specifications:

Control: On board Menu, RDM, DMX512

Fan mode: Silent, Auto, Full

DMX Channels: Dimmer Mode, 1Ch

Basic Mode, 3Ch

Pro mode, 5Ch

### Mechanical Specifications:

Power connections: Neutrik powerCON in- and through

Data connections: Neutrik 3&5p DMX in- and through

Pole operated: Available as option

Construction: Machined Aluminium, sheet metal, moulded engineering grade plastics.

Colour: Black

Weight: 8,2Kg

## LED THEATRE LUMINAIRES



INFINITY *Signature* SERIES  
TRADITION REDEFINED

&infinity



## LED THEATRE LUMINAIRES

### Lens for Infinity Profile

- 200100 TLT-5 5° Lens Tube
- 200101 TLT-10 10° Lens Tube
- 200102 TLT-14 14° lens tube
- 200103 TLT-19 19° lens tube
- 200104 TLT-26 26° lens tube
- 200105 TLT-36 36° lens tube
- 200106 TLT-50 50° lens tube



### HD Lens for Infinity Profile

- 200110 TLT-19HD 19° HD lens tube
- 200111 TLT-26HD 26° HD lens tube



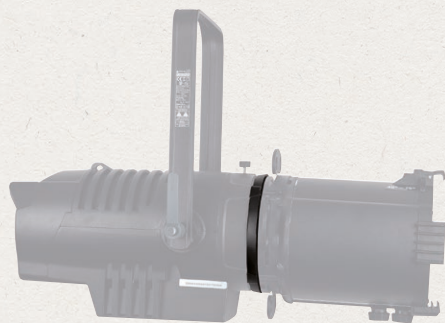
### Zoom Lens for Infinity Profile

- 200140 TLT-1230 15-35° zoom
- 200141 TLT-2350 25-50° zoom



### Lens adaptor for Selecon Optics

- 200132 Infinity Signature Series



### Pole operation yoke for Profiles

- 200133 Infinity Signature Series

### Pole operation yoke for Fresnels

- 200134 Infinity Signature Series



### Filterframe for Infinity lens tube

- 200120 Only for 5° lens tube
- 200121 Only for 10° lens tube
- 200122 Only for 14°, 19°, 26°, 36°, 50° lens tube



### Filterframe for Infinity zoomlens

- 200123





## ACCESSORIES

**Iris for Infinity Profile**  
200130



**Gobo holder for Infinity Profile**  
200131



**Filterframe for Infinity Fresnel**  
200250

**Barndoor for Infinity Fresnel**  
200251



INFINITY *Signature* SERIES  
TRADITION REDEFINED

&infinity



PROFESSIONAL THEATRE FIXTURES



[WWW.INFINITY-SIGNATURE.COM](http://WWW.INFINITY-SIGNATURE.COM)

Infinity LED Theatre-luminaires are exclusively distributed by

**Highlite International B.V.** Vestastraat 2, 6468 EX Kerkrade, The Netherlands  
sales@highlite.nl - export@highlite.nl Phone: +31-(0)45 - 5667701

 infinity