

CHIMP



THE NEXT STAGE

 infinity

InfiniTY Chimp Moving Light Controller

Ultimate user-friendliness

Chimp V2, the Next Stage

The InfiniTY Chimp G2 light controllers combine user-friendly design with true functionality: the Chimp 100.G2 with 2 DMX universes or the 300.G2 with 4 DMX universes and integrated 22" touchscreen. Both have the same principle: to provide the necessary tools for every light-designer and give them the freedom to create the show they want. Every feature, effect and application has been engineered specifically to support this very principle. Although the Chimp 300.G2 has extended universe, fixture and memory capacity, it remains compatible with the Chimp 100.G2. Apart from the difference in memory stacks and memories features, effects and possibilities of the 100.G2 and 300.G2 are nearly the same. Programmed and saved shows on either Chimp unit are interchangeable and will run smoothly accordingly. This feature alone adds a new dimension to the compatibility of the various Chimp units.

To name a few of the versatile features each Chimp possesses: every Chimp unit is equipped with the extensive AtlaBase fixture library, giving access to more than 21,000 different fixtures. With every Chimp software upgrade the AtlaBase library is updated automatically. The Effects Engine can be applied to any available fixture attribute easily. This helps you to shape the show according to your creativity. You can use Magic Sheets with which you can visualise your entire setup in 2D. Always get the right colour with an accurate colour picker, RGB / CMY Control or from the built-in Lee, Rosco and Apollo filter libraries. The next generation Chimp controllers provide all the tools necessary to create the perfect show. All you need to do is put these tools to good use.

The Chimp accepts OSC protocol, which means you can control and program your Chimp from a distance with a tablet like an iPad. You can design your own OSC layout and add to the GUI the specific functions you would like to use in your show. Even XY positioning is available to set up your moving heads.

Fine-tune your CHIMP show by using the free CHIMP OnPC software. Every programming option that you use on the light controller is also available in the OnPC software. Tools like the Fixture Builder are very useful to make changes or create new Fixture files or maybe you would like to make changes in your Magic Sheet. Connect a Banana Wing to your PC and you will have 2 universes as output with the CHIMP OnPC software as well as 20 extra playback faders at your disposal.

The Peanut Box is an extension kit for InfiniTY Chimp consoles and OnPC software that adds four universes to your setup. There's also a Dongle for OnPC that enables 2 DMX universes in the OnPC software and adds 2 extra universes to your Chimp setup. Last but not least, the Sidekick is a Chimp OnPC console that has the same intuitive controls as the Chimp and allows you to plan your shows from anywhere.

CHIMP SERIES

by infin



WIRELESS SOLUTION
MADE IN SWEDEN



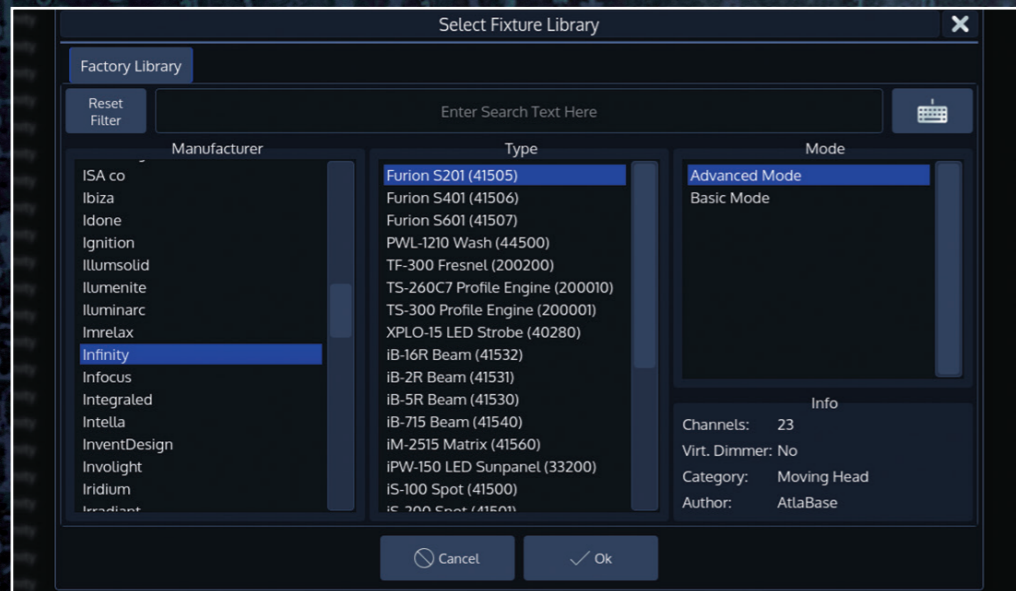
powered by
atlaBASE

Infinity Chimp V2 Software

Ultimate user-friendliness

AtlaBase fixture library

AtlaBase is a database comprising more than 21.000 lighting fixtures from a wide variety of manufacturers. This library consists of DMX personalities which are displayed instantly in the programmer as soon as a fixture has been selected. In the programmer, information like colour filters, gobo icons or filters are shown and available. Simply select the fixture you require from the library and you can start programming. The Chimp software always uses the latest AtlaBase version and with every new software release, the database library is updated automatically, providing the latest fixture additions.



Built-in fixture builder

If a certain fixture or luminaire is not yet available in the AtlaBase library you can add it with the built-in Fixture Builder. By using the Fixture Builder you can easily create any fixture and enter DMX ranges accordingly. You can add gobo or colour icons to the file, which can be stored in the personal library. These additional fixtures will remain available within the Chimp unit even after installing new Chimp software releases and are exchangeable between all Chimp models. A fixture file can be made from scratch or made with help from an existing file from the factory library and saved in the personal library.

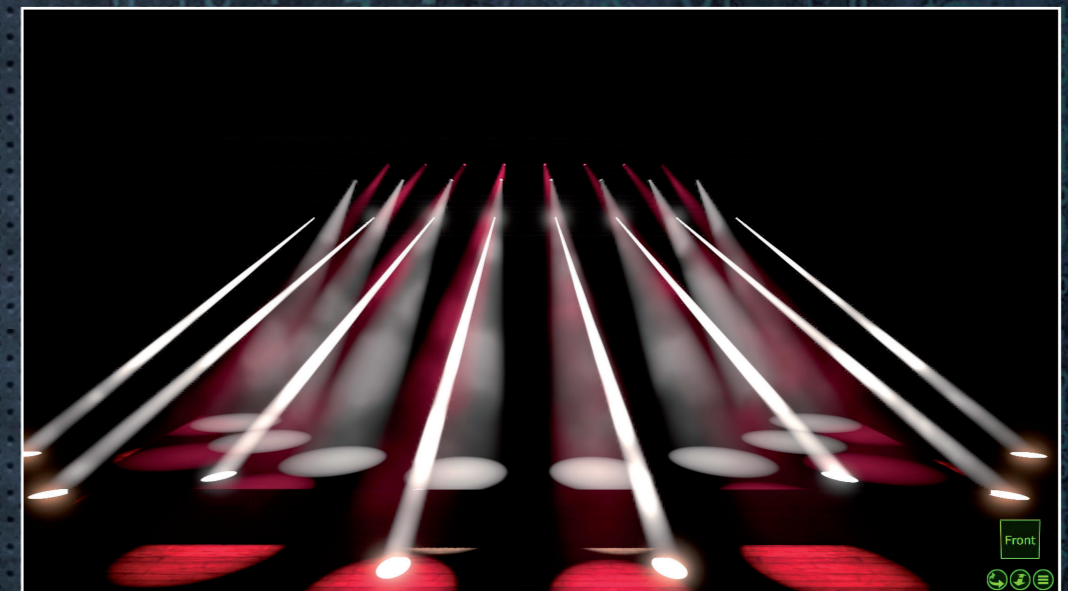


Infinity Chimp V2 Software

Ultimate user-friendliness

Fan mode

As a light designer you don't want to calculate values, you like to create. Therefore, the Chimp Fan mode is a useful tool to evenly divide DMX values over the selected fixtures. The Fan mode can be applied to all attributes like intensity, colour, zoom and, of course, position. Fan mode is easy to apply: use the dedicated Fan button while adjusting the DMX values. It can be applied from the left, right or centre point of view. It's also possible to apply groups within fanning, which makes it even more flexible to work with when applied to a large number of fixtures.



Advanced Cuelist timings

The Chimp has Advanced Cuelist timings with which you can specify the exact point in a show when an attribute like a certain gobo, colour, zoom or movement needs to be activated within the general cue timing. With the Advanced Cuelist timings you can also specify the delay and fade-time for all attributes.



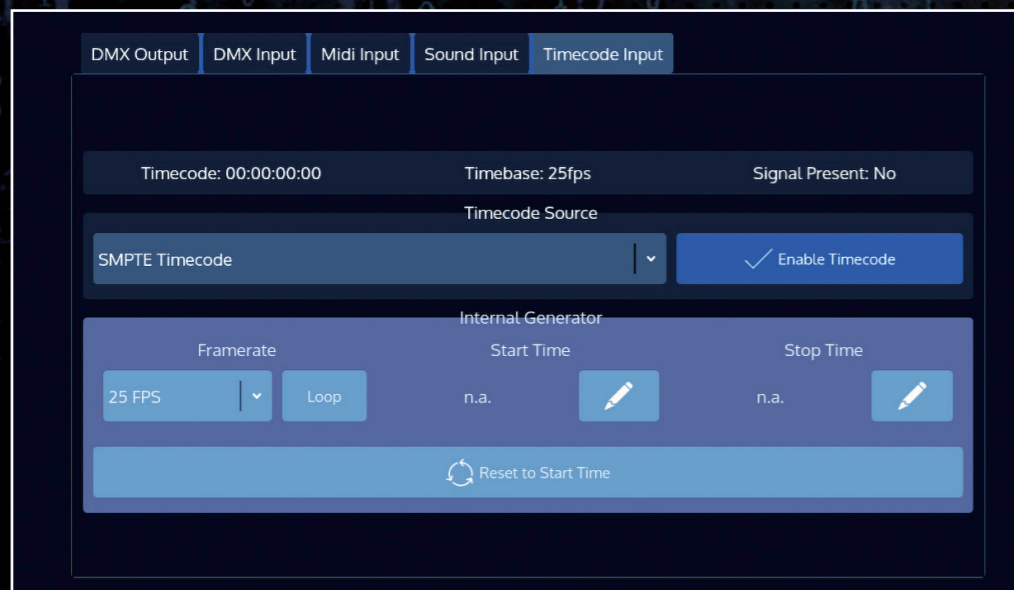
Effects Engine

The Effects Engine offers the perfect tool to effortlessly add motions to a show and is applicable on any available attribute of a fixture. The most frequently used fixture movements like pan and tilt or RGB-effects are available as pre-defined effects. Besides pre-defined effects there is a custom section to create your own effects. Select the desired shape and assign it to any attribute of the desired fixture or group of fixtures. Effects can be stacked and each individual effect offers various parameters with which you can create unique shows.



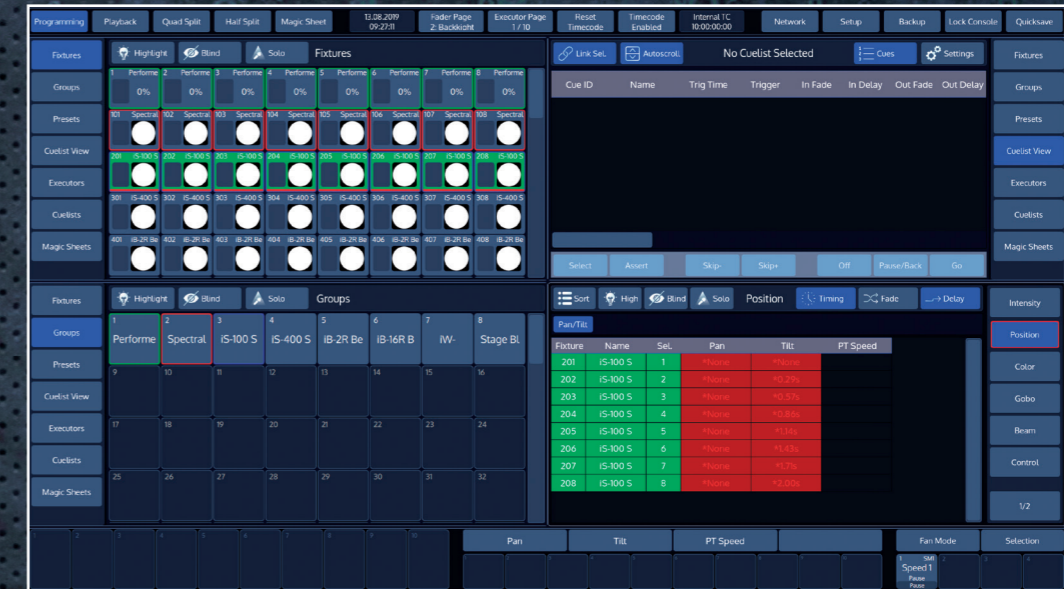
Midi Audio & Timecode integration

MTC (Midi Time Code) is an easy way to make sure that CUE-points and CUE-lists run exactly in sync with the music of your show. Connect the midi source via a 5-pins DIN to the Chimp 300 and you are good to go. With MIDI you can also start the Executors. The Chimp is also compatible with SMPTE timecode to sync the show. The timecode can be delivered through an external source or generated internally. MTC, SMPTE and MIDI triggers are available on the Chimp 300. The Chimp 100 can only use MIDI Triggers.



Individual timings

A timing-element within the programming section, which is very handy and a true time saver, is "Individual Timing". With this feature you can address a certain timespan to a number of fixtures within one cue. The Chimp will calculate and divide the available time over the defined fixtures and corresponding effects automatically. With this feature you can not only define a certain timespan but also define a fading effect. Instead of using precious time to work out the time per unit, you can use the saved time to create the best effects for your show.



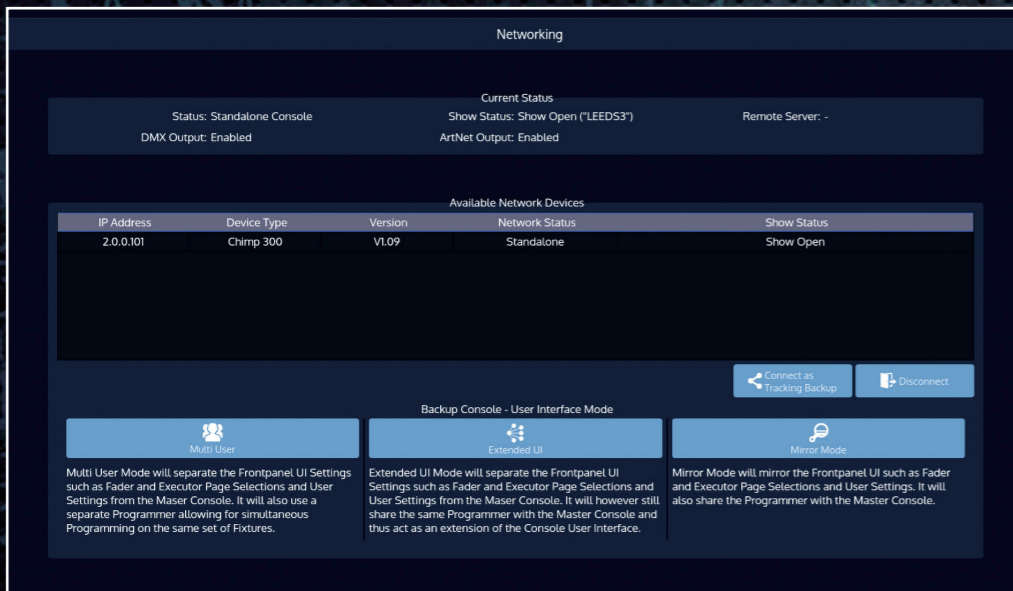
Magic Sheet

Besides the normal playback view, the Chimp also offers a Magic Sheet view. With the Magic Sheet you have the ability to visualise your entire stage setup in 2D on your screen. The fixtures can be placed on the screen freely. Groups, presets or executors are also available in the Magic Sheet to create your personal overview. In an instant you will see what kind of cue or cue list is live at any moment in the show. The Magic Sheet gives you the possibility to build your own GUI to suit your own personal preference.



Inter-Console Networking

The Chimp has Inter-Console Networking which offers a Tracking Backup feature. This feature makes sure that a second Chimp unit always works as a backup in case the first Chimp should fail. The Tracking Backup feature only starts automatically as soon as two similar Chimp units are connected via UTP. Another advantage of connecting two of the same Chimp units together is Dual programming. Two light designers can program the same show simultaneously with three different options: they can see and alter each other's work, they can see but not alter each other's work. Or they can both work independently from each other on the same show without being able to interfere.



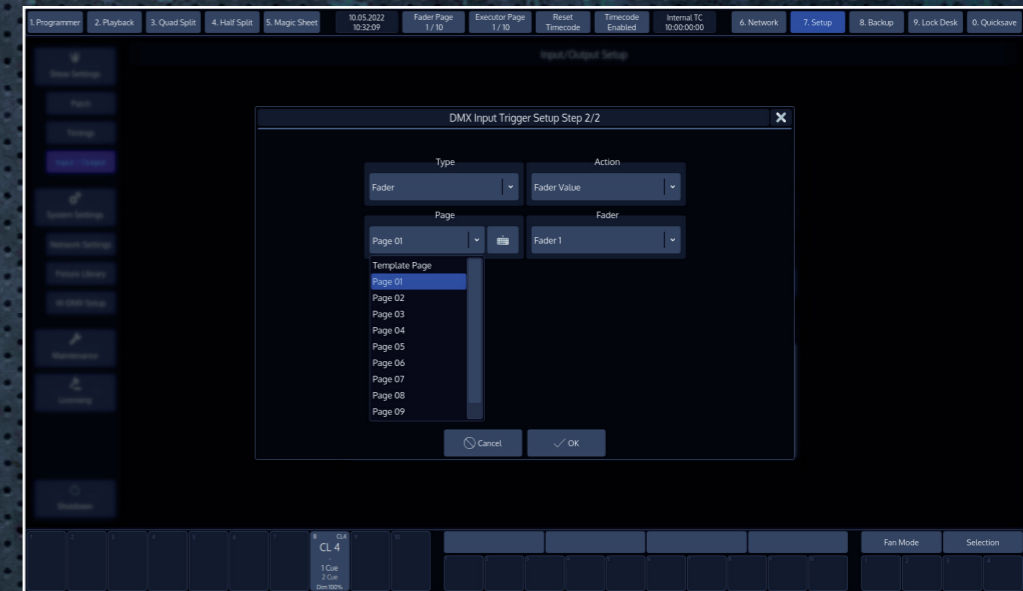
Personalised Colours in GUI

Fixtures, Groups, Presets, Cuelist and Master Faders can be personalised with individual user-defined colours. They will be represented in the form of a coloured border for each element. Faders and Executors will mirror the assigned colour of their associated memory. Press the button "Name" twice to switch into appearance mode. Then you can select the element that you would like to set the colour. In the Magic Sheet there is also a possibility to group elements and give them a background colour.

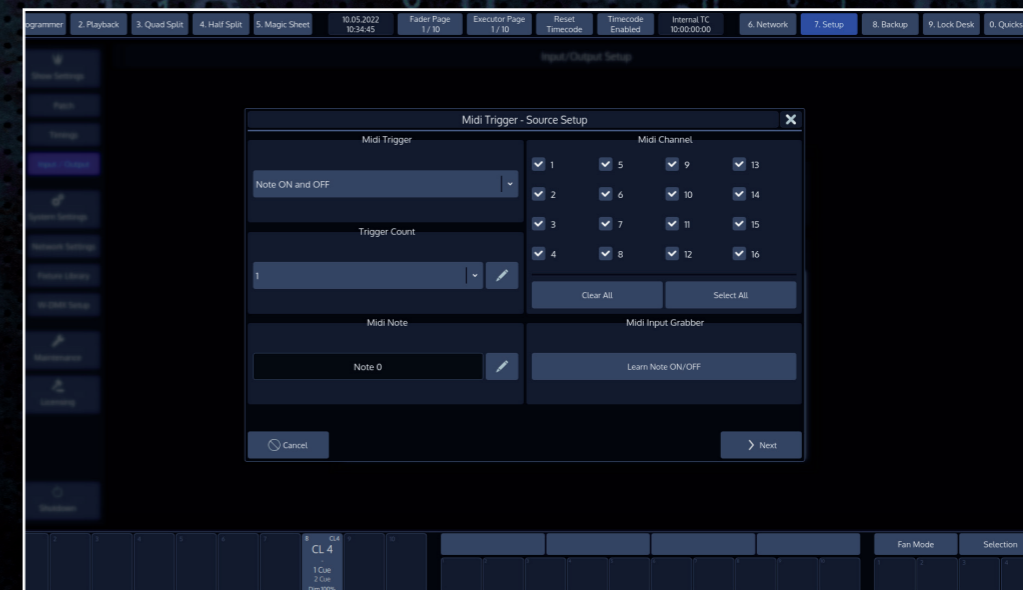


DMX and MIDI Mapping

For greater flexibility, both Chimp consoles have an integrated Wireless DMX module by Wireless solutions. The number of available DMX channels on both Chimp consoles can be expanded with different Chimp accessories: the Peanut Box add fours universes, the Banana Wing adds two universes and the Dongle for OnPC also adds two universes. Each accessory offers extra functionality as well. The latest Chimp updates include more advanced DMX mapping, allowing more flexible DMX commands and making DMX remote device use possible too.



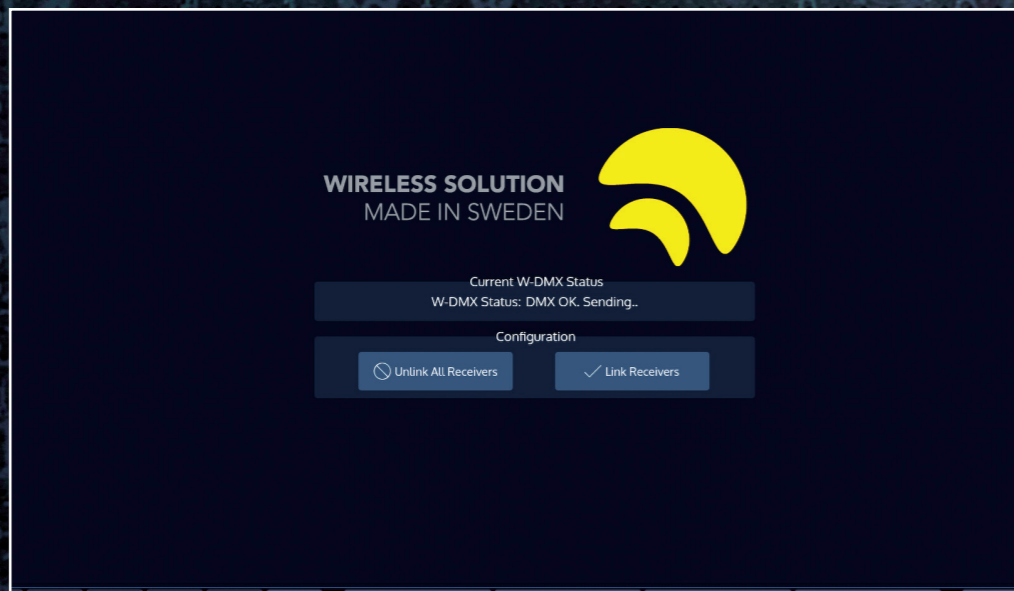
The Chimp's MIDI mapping capabilities give you easy control over the functionality of the software and a number of MIDI signals that are capable of triggering certain functions in the Chimp software have already been preset but are also freely configurable. New learning functions for both DMX and MIDI enable the Chimp to determine where a signal is coming from. In addition to recognising MIDI triggers, the Chimp can now also handle Control changes, which means MIDI faders and rotary encoders can now be used. Simply select MIDI learn on the Chimp, turn a knob on your MIDI device and the Chimp will ask you what you want to do with it!



Infinity Hardware

Hardware

Each Chimp has 4 master faders and 10 playback faders. These faders are set by default for dimming purposes. They are, however, all programmable and can be assigned to control a lot of different functions like Effect speed, Effect size, In-fade or X-fade, for instance. There are 4 encoders for programming attributes which respond intuitively and support the light designer during programming. As an additional hardware feature, Wireless DMX by Wireless Solutions Sweden has been integrated as standard into every G2 light controller. An external keyboard can be connected via USB, as can flash drives to exchange shows or expand your possibilities by adding the optional Banana Wing.



Infinity Chimp 100.G2

55004 2 Universe DMX Console incl. Wireless Transmitter

Infinity® Chimp 100.G2 Light Controller

The Infinity Chimp 100.G2 light controller delivers all the tools you need to create a light show within minutes. With the Chimp 100.G2 you have access to two universes with unlimited patchable fixtures. It has been engineered with one thing in mind: user convenience. It is the perfect controller for beginners and even more so for advanced users.

You can connect up to two external touchscreens on which your entire show unfolds. Use personalised colours in the GUI, add Magic sheets to visualise your show in 2D and put the extensive AtlaBase to good use. The AtlaBase offers more than 21.000 fixtures to choose from. But in case your specific fixture is missing, you can add this to your setup via the built-in Fixture Builder. Add effects, movements, colour changes and more by using the Effects Engine. The integrated Wireless DMX module by Wireless Solutions adds to the versatility of the system. With each software upgrade new features are added to the Chimp, the AtlaBase fixture library is updated and user-requested applications are made available.



Technical Features

- Familiar keys, numeric keypad and 4 Encoders
- 10 Playback faders with Go, Pause/Reverse, Flash keys on multiple pages
- 10 Executer/Flash keys on multiple pages
- Colour picker, Swatchbook by Lee, Rosco and Apollo Filters
- Gobo Picker
- User definable groups and presets
- User definable display layout
- 4 user definable master faders
- Effects engine
- Fan functions on all attributes
- Built-in Fixture builder
- Cue list screen

Connectors

- 2 x DMX 5-pin opto-isolated in/out (RDM ready)
- RP-SMA W-DMX antenna output
- Ethernet/Artnet
- 2x HDMI monitor out
- Midi In/Thru/Out 5-pin DIN
- Audio Input 3-pin XLR
- IEC Power Supply Input
- 2 x Dimmable Desklight outputs 3-pin XLR
- 3 x USB-B connectors

Software

- 2 universe 1024 channels DMX (expandable up to 10 universes)
- 5000 memories
- 600 memory stacks
- 100 groups
- 9 x 100 presets (position, colour, beam, effects, etc.)
- Command line interface
- Output visualiser
- Libraries provided by AtlaBase Ltd (> 21.000 fixtures)
- Tracking and non-tracking options

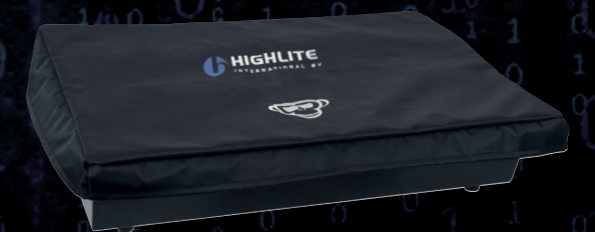
Physical

Housing: Metal & flame-retardant plastic side covers
 Dimensions: 400 x 575 x 160 mm (LxWxH)
 Weight: 9 Kg
 Ambient Temp. Range: 0 ~ 35 °C
 Storage Temp. Range: -5 ~ 45 °C

55001 Dust cover for Chimp 100

55002 Customizable Dust cover for Chimp 100

The dedicated Infinity Chimp dust covers can be customised. A predefined space is available for adding your company logo. For further information and questions, please contact your sales agent.



WIRELESS SOLUTION
MADE IN SWEDEN



Infinity Chimp 300.G2

55014 4 Universe DMX Console incl. Wireless Transmitter

Infinity® Chimp 300 Light Controller

The Infinity Chimp 300.G2 light controller with integrated 22" touchscreen delivers all the tools you need to create a light show within minutes. With the Chimp 300.G2 you have access to four universes with unlimited patchable fixtures. It has been engineered with one thing in mind: user convenience. It is the perfect controller for beginners and even more so for advanced users.

You can connect an additional external touchscreen to the Chimp 300.G2. Use personalised colours in the GUI, add Magic sheets to visualise your show in 2D and put the extensive AtlaBase to good use. The AtlaBase fixture file offers more than 21.000 fixtures to choose from. But in case your specific fixture is missing, you can add this to your setup via the built-in Fixture Builder. Add effects, movements, colour changes and more by using the Effects Engine. Choose your desired colour out of the Filter libraries from Lee, Rosco or Apollo. The integrated Wireless DMX module by Wireless Solutions enhances the flexibility of the system. With each software version new features are added to the Chimp and the AtlaBase fixture library is updated.



Technical Features

- Familiar keys, numeric keypad and 4 Encoders
- 10 Playback faders with Go, Pause/Reverse, Flash keys on multiple pages
- 10 Executer/Flash keys on multiple pages
- Colour picker, Swatchbook by Lee, Rosco and Apollo Filters
- Gobo Picker
- User definable groups and presets
- User definable display layout
- 4 user definable master faders
- Effects engine
- Fan functions on all attributes
- Built in Fixture library and Fixture builder
- Cue list screen

Connectors

- 4 x DMX 5-pin opto-isolated in/outs (RDM ready)
- RP-SMA W-DMX antenna output
- Ethernet/Artnet
- HDMI monitor out
- Midi In/Thru/Out 5-pin DIN
- Audio/SMPTE/LTC Input 3-pin XLR
- IEC Power Supply Input
- 2 x Dimmable Desklight outputs 3-pin XLR
- 2 x USB-B connectors

Software

- 4 universe 2048 channels DMX (expandable up to 10 universes)
- 10000 memories
- 600 memory stacks
- 100 groups
- 9 x 100 presets (position, colour, beam, effects, etc.)
- Command line interface
- Output visualizer
- Libraries provided by AtlaBase Ltd (> 21.000 fixtures)
- Tracking and non-tracking options

Physical

Display: 22 inch 1920x1080 Full HD
 Touch: Capacitive touchscreen
 Housing: Metal & flame-retardant plastic, side covers
 Dimensions: 647 x 575 x 279 mm (LxWxH)
 Weight: 18 Kg
 Ambient Temp. Range: 0 ~ 35 °C
 Storage Temp. Range: -5 ~ 45 °C



WIRELESS SOLUTION
MADE IN SWEDEN



55011 Dust cover for Chimp 300

55012 Customisable Dust cover for Chimp 300

The dedicated Infinity Chimp dust covers can be customised. A predefined space is available for adding your company logo. For further information and questions, please contact your sales agent.



Infinity Banana Wing

55020 2 Universe Expansion Wing



The Banana Wing is the ideal tool for extending the possibilities and flexibility of the Infinity Chimp consoles. The Banana Wing offers operators 20 extra playback faders and will release 2 extra universes on top of your Chimp's capabilities. The console will recognise the presence of the Banana Wing and reconfigure the second external monitor to show additional playbacks to the operator. The Banana Wing will also enable 2 universes of DMX and Artnet when connected to your Chimp OnPC software.

Connectors:

- 2 x DMX 5-pin opto-isolated in/out (RDM ready)
- 1x USB-B connector
- 1x USB-A connector
- IEC Power Supply Input

Physical

Housing: Metal & flame-retardant plastic side covers
 Dimensions: 400 x 490 x 160 mm (LxWxH)
 Input voltage: 100~240VAC, 50/60 Hz (auto ranging)
 Power consumption: 25 W
 Weight: 4 Kg
 Ambient Temp. Range: -0 ~ 40 °C



55021 Dust cover for Banana Wing



Infinity SideKick

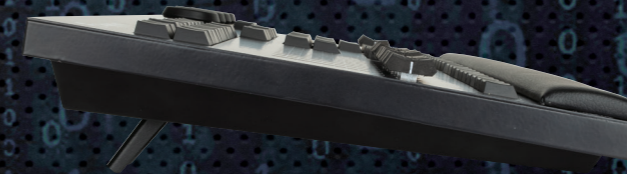
55007 Chimp OnPC Wing

Infinity® SideKick Console

The Infinity SideKick is a Chimp OnPC console that allows you to quickly prepare your shows from anywhere. It has exactly the same intuitive controls as the Chimp itself.

The power runs via the USB Cable, so no additional power adapter is required. This, in combination with its lightweight design, makes it extremely suitable for use in the train, car, at home or outside.

Two universes (Art-Net and sACN) are activated once you connect the SideKick to your OnPC software. You can then use this as an input for your visualisation software. This makes the SideKick a perfect buddy for your Chimp light controller.



Technical Features

- Familiar keys, numeric keypad and 4 Encoders
- 10 Playback faders with Go, Pause/Reverse, Flash keys on multiple pages
- 10 Executer/Flash keys on multiple pages
- Colour picker, Swatchbook by Lee, Rosco and Apollo Filters
- Gobo Picker
- User definable groups and presets
- User definable display layout
- 4 user definable master faders
- Effects engine
- Fan functions on all attributes
- Built-in Fixture builder
- Cue list screen

Connectors

- 1 x USB-B (Power IN - 5V DC)
- 1 x USB-A (Data IN)
- Art-Net/sACN

Physical

Housing: Metal
 Dimensions: 510 x 295 x 90 mm (LxWxH)
 Weight: 4.95 Kg
 Power consumption: 2.5 W
 Ambient Temp. Range: -5 °C - 40 °C



WIRELESS SOLUTION
MADE IN SWEDEN



55009 Backpack for Sidekick

Keep your Sidekick and laptop clean and dust free and protect them during transport with this tough and lightweight gear bag.



Infinity Peanut Box

55008 Chimp 4-universe expansion kit

Infinity® Peanut Box

The Infinity Peanut Box is an extension kit for your Infinity Chimp console and OnPC software. Besides adding four universes to your setup, it also has a MIDI and audio input that you can use. This will help you immensely in preparing your (timecode) show. Namely, this expansion kit enables SMPTE timecode on the Chimp 100 and Chimp OnPC.

The Peanut Box comes with a lockable plug to prevent the power supply from falling out. In addition, a USB Cable is included. Due to its compact design, you can install it in a 19" rack with a 1U height (40 mm).



Connectors

- 1 x Power IN (5V DC)
- 4 x DMX OUT 5-pin XLR
- 1 x USB-B IN
- 3 x MIDI 5-pin DIN (IN/THRU/OUT)
- 1 x Audio IN 3-pin XLR
- Art-Net/sACN

Physical

Housing: Metal & flame-retardant plastic side covers
 Dimensions: 174 x 137 x 42 mm (LxWxH)
 Weight: 0.8 Kg
 Power consumption: 5 W
 Ambient Temp. Range: -5 °C - 40 °C



WIRELESS SOLUTION
MADE IN SWEDEN



Infinity Chimp Dongle for OnPC

55004 2 Universes 1 DMX output

Infinity® Chimp Dongle for OnPC

The Infinity Chimp dongle for OnPC will enable 2 DMX universes in your Infinity Chimp OnPC software. With the available DMX output on this dongle, it is possible to distribute the first DMX universe via traditional cable. A second universe is available through Art-Net or sACN.

Art-Net and sACN give you the freedom to use any visualisation software to capture the show data and display the results on your virtual stage. This way, preparing your show file becomes easier and more fun.

The two indicator LEDs on the PC dongle will light up as soon as your PC/laptop is connected. No additional power supply is required as the dongle is powered via the USB connection. Please note that DMX, USB and Ethernet cables are not included.



Connectors

- 1 x USB-B (Power IN - 5V DC)
- 1 x DMX OUT 5-pin XLR

Physical

Housing: Aluminium
 Dimensions: 39 x 101 x 39 mm (LxWxH)
 Weight: 0.15 Kg
 Power consumption: 2 W
 Max. Ambient Temp: 40 °C



WIRELESS SOLUTION
MADE IN SWEDEN



Chimp 100.G2

55004 2 Universe DMX Console incl. Wireless Transmitter

Technical Features

- Familiar keys, numeric keypad and 4 Encoders
- 10 Playback faders with Go, Pause/Reverse, Flash keys on multiple pages
- 10 Executer/Flash keys on multiple pages
- Colour picker, Swatchbook by Lee, Rosco and Apollo Filters
- Gobo Picker
- User definable groups and presets
- User definable display layout
- 4 user definable master faders
- Effects engine
- Fan functions on all attributes
- Built-in Fixture builder
- Cue list screen

Connectors

- 2 x DMX 5-pin opto-isolated in/outs (RDM ready)
- RP-SMA W-DMX antenna output
- Ethernet/Artnet
- 2x HDMI monitor out
- Midi In/Thru/Out 5-pin DIN
- Audio Input 3-pin XLR
- IEC Power Supply Input
- 2 x Dimmable Desklight outputs 3-pin XLR
- 3 x USB-B connectors

Software

- 2 universe 1024 channels DMX (expandable up to 10 universes)
- 5000 memories
- 600 memory stacks
- 100 groups
- 9 x 100 presets (position, colour, beam, effects, etc.)
- Command line interface
- Output visualiser
- Libraries provided by AtlaBase Ltd (> 21.000 fixtures)
- Tracking and non-tracking options

Physical

Housing: Metal & flame-retardant plastic side covers
 Dimensions: 400 x 575 x 160 mm (LxWxH)
 Weight: 9 Kg
 Ambient Temp. Range: 0 ~ 35 °C
 Storage Temp. Range: -5 ~ 45 °C

Chimp 300.G2

55014 4 Universe DMX Console incl. Wireless Transmitter

Technical Features

- Familiar keys, numeric keypad and 4 Encoders
- 10 Playback faders with Go, Pause/Reverse, Flash keys on multiple pages
- 10 Executer/Flash keys on multiple pages
- Colour picker, Swatchbook by Lee, Rosco and Apollo Filters
- Gobo Picker
- User definable groups and presets
- User definable display layout
- 4 user definable master faders
- Effects engine
- Fan functions on all attributes
- Built in Fixture library and Fixture builder
- Cue list screen

Connectors

- 4 x DMX 5-pin opto-isolated in/outs (RDM ready)
- RP-SMA W-DMX antenna output
- Ethernet/Artnet
- HDMI monitor out
- Midi In/Thru/Out 5-pin DIN
- Audio/SMPTE/LTC Input 3-pin XLR
- IEC Power Supply Input
- 2 x Dimmable Desklight outputs 3-pin XLR
- 2 x USB-B connectors

Software

- 4 universe 2048 channels DMX (expandable up to 10 universes)
- 10000 memories
- 600 memory stacks
- 100 groups
- 9 x 100 presets (position, colour, beam, effects, etc.)
- Command line interface
- Output visualiser
- Libraries provided by AtlaBase Ltd (> 21.000 fixtures)
- Tracking and non-tracking options

Physical

Display: 22 inch 1920x1080 Full HD
 Touch: Capacitive touchscreen
 Housing: Metal & flame-retardant plastic side covers
 Dimensions: 647 x 575 x 279 mm (LxWxH)
 Weight: 18 Kg
 Ambient Temp. Range: 0 ~ 35 °C
 Storage Temp. Range: -5 ~ 45 °C

Banana Wing

55020 2 Universe Expansion Wing

Connectors

- 2 x DMX 5-pin opto-isolated in/outs (RDM ready)
- 1x USB-B connector
- 1x USB-A connector
- IEC Power Supply Input

Physical

Housing: Metal & flame-retardant plastic side covers
 Dimensions: 400 x 490 x 160 mm (LxWxH)
 Input voltage: 100~240VAC, 50/60 Hz (auto ranging)
 Power consumption: 25 W
 Weight: 4 Kg
 Ambient Temp. Range: 0 ~ 40 °C

SideKick

55007 Chimp OnPC Wing

Technical Features

- Familiar keys, numeric keypad and 4 Encoders
- 10 Playback faders with Go, Pause/Reverse, Flash keys on multiple pages
- 10 Executer/Flash keys on multiple pages
- Colour picker, Swatchbook by Lee, Rosco and Apollo Filters
- Gobo Picker
- User definable groups and presets
- User definable display layout
- 4 user definable master faders
- Effects engine
- Fan functions on all attributes
- Built-in Fixture builder
- Cue list screen

Connectors

- 1 x USB-B (Power IN - 5V DC)
- 1 x USB-A (Data IN)
- Art-Net/sACN

Physical

Housing: Metal
 Dimensions: 510 x 295 x 90 mm (LxWxH)
 Power consumption: 2.5 W
 Weight: 4.95 Kg
 Ambient Temp. Range: -5 °C - 40 °C

Peanut Box

55008 Chimp 4-universe expansion kit

Connectors

- 1 x Power IN (5V DC)
- 4 x DMX OUT 5-pin XLR
- 1 x USB-B IN
- 3 x MIDI 5-pin DIN (IN/THRU/OUT)
- 1 x Audio IN 3-pin XLR
- Art-Net/sACN

Physical

Housing: Metal & flame-retardant plastic side covers
 Dimensions: 174 x 137 x 42 mm (LxWxH)
 Power consumption: 5 W
 Weight: 0.8 Kg
 Ambient Temp. Range: -5 °C - 40 °C

Chimp Dongle for OnPC

55005 2 universes, 1 DMX output

Connectors

- 1 x USB-B (Power IN - 5V DC)
- 1 x DMX OUT 5-pin XLR

Physical

Housing: Aluminium
 Dimensions: 39 x 101 x 39 mm (LxWxH)
 Power consumption: 2 W
 Weight: 0.15 Kg
 Max. Ambient Temp: 40 °C

Infinity Chimp Tour Pack

55031 Chimp 100.G2 with Wing and flight case

Especially for on-the-road purposes: the Chimp 100.G2 Tour Pack. A complete ready-to-go system incorporating one Chimp 100.G2 unit with Banana Wing, offering a total of 200 patchable fixtures over 4 physical DMX universes and 30 playback faders. Two 22" touchscreens have also been incorporated. Dust covers for the Chimp 100.G2 and Banana Wing are also part of the package deal. A dedicated Chimp Tour Pack Premium line flight case makes sure that the entire setup is roadproof and a powerbox with 3 metre power cable is also included.



Infinity Chimp 100.G2 Tour Pack

55004SET01 Complete Chimp 100.G2 Set with touchscreen

The Chimp 100.G2 Tour Pack consists of a dedicated Premium Line Infinity Chimp 100 flight case which holds one pre-installed Chimp 100.G2 unit with a 22" touchscreen. To keep the Chimp clean a dust cover has been added. To complete the setup you will find two white COB XLR mini-lites and a powerbox with 3 metre power cable.



Infinity Chimp 300.G2 Tour Pack

55014SET01 Complete Chimp 300.G2 Set with flight case

The Chimp 300.G2 Tour Pack consists of a dedicated Premium Line Infinity Chimp 300 flight case which holds one Chimp 300.G2 unit with integrated touchscreen. To keep the Chimp clean a dust cover has been added and to complete the setup you will find two white COB XLR mini-lites as well. The flight case offers maximum protection due to high-impact foam. An additional accessory compartment can be found inside the case.



Infinity Chimp Accessories

The dedicated Infinity Chimp dust covers can be customised. A predefined space is available for adding your company logo. For further information and questions, please contact your sales agent.

55001 Dust cover for Chimp Tour Pack

55002 Customizable Dust cover for Chimp 100

Technical Features:

Material: Nylon Fabric
 Dimensions: 400 x 575 x 100 mm (LxWxH)
 Weight: 0,1 Kg
 Ambient Temp. Range: -5 ~ 40 °C



55011 Dust cover for Chimp 300

55012 Customizable Dust cover for Chimp 300

Technical Features:

Housing: Nylon Fabric
 Dimensions: 647 x 575 x 275 mm (LxWxH)
 Weight: 0,2 Kg
 Ambient Temp. Range: -5 ~ 40 °C



55021 Dust cover for Banana Wing

Technical Features:

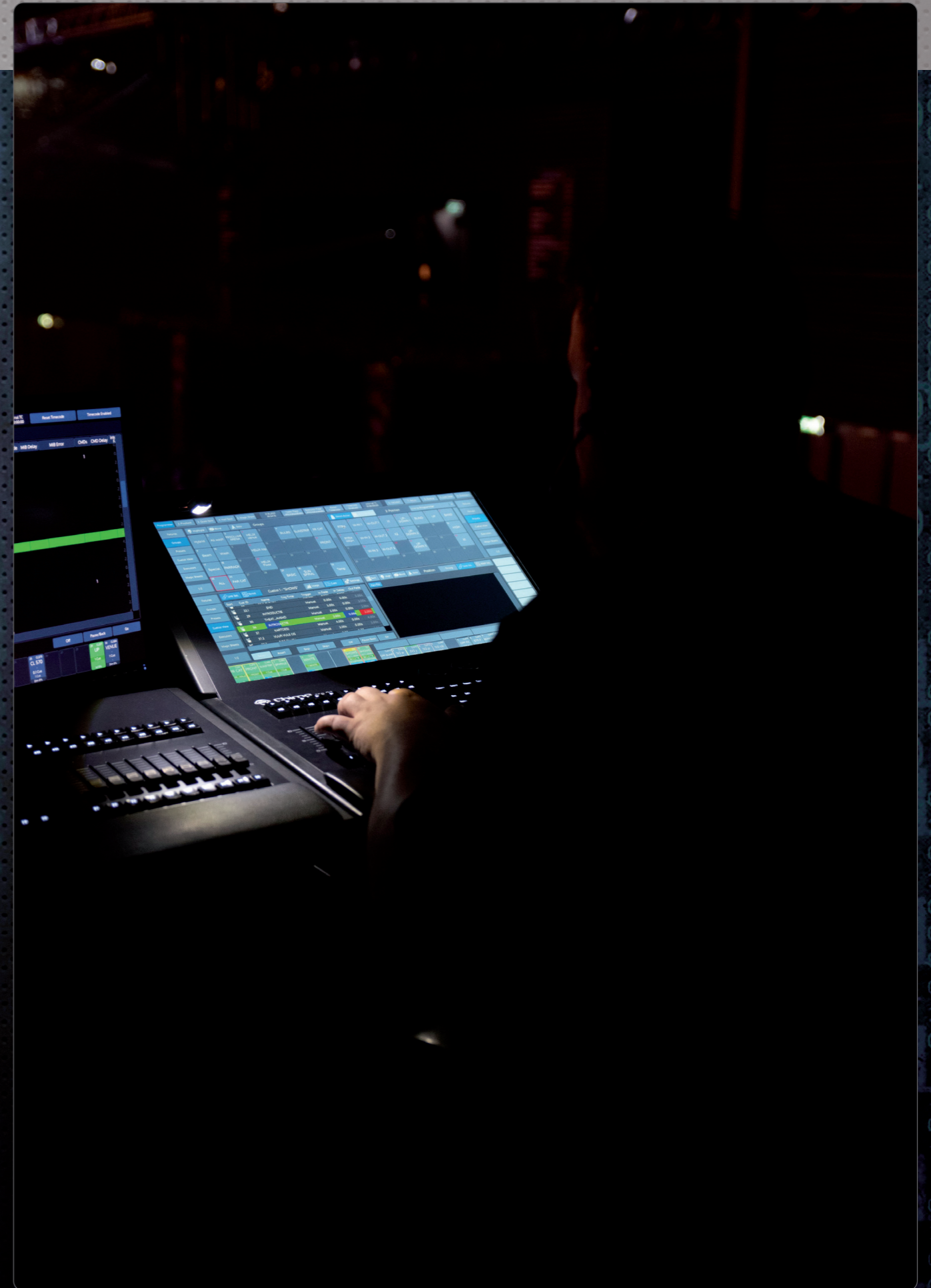
Material: Nylon Fabric
 Dimensions: 400 x 490 x 75 mm (LxWxH)
 Weight: 0,1 Kg
 Ambient Temp. Range: -5 ~ 40 °C



55009 Backpack for Sidekick

Technical Features:

Material: Nylon Fabric
 Dimensions: 525 x 100 x 310 mm (LxWxH)
 Weight: 0,2 Kg



Infinity Chimp Accessories

The Premium Line cases from Infinity are the ideal solution for professional users, regularly moving and storing small to medium-sized items. The Premium Line cases are built in Europe with a perfect fit and top-quality finish. They are made with a high quality core construction from only the finest materials including 9-mm birch plywood and faced with thermoplastic high-grade laminates. They have been equipped with Penn Elcom hardware and the standard 30 mm aluminium angles protect all leading edges. The polyurethane and polyethylene foam interior has been shaped to perfectly fit your gear and ensure maximum protection. The Infinity Premium Line cases are the perfect choice for professionals.

D7250 Case for Chimp 100

Technical Features:

Dimensions: 630 x 570 x 230 mm
Wheels: none



D7251 Case for Chimp 300

Technical Features:

Dimensions: 722 x 632 x 374 mm (without wheels)
Wheels: 4x 100 mm swivel (2x brake)



D7263 Case for Chimp Tour Pack

Technical Features:

Dimensions: 1290 x 630 x 320 mm
LCD compartment: 550 x 410 x 70 mm (max)
Wheels: none
Weight: 24 kg



D7264 Case for Chimp 100 + Touchscreen

Technical Features:

Dimensions: 700 x 630 x 320 mm
LCD compartment: 550 x 410 x 70 mm (max.)
Wheels: yes
Touchscreen: none
Weight: 22 kg



D7263 Case for Banana Wing

Technical Features:

Dimensions: 570 x 570 x 220 mm
Wheels: none
Weight: 11,6 kg



Infinity Chimp Service

Selling and delivering an Infinity Chimp controller is where it starts. But it does not stop there. Every Chimp owner has to be able to take full advantage of all the possibilities the Chimp has to offer. That is why various platforms have been arranged to provide knowledge and expertise to the entire Chimp community.

- Chimp tutorials: the Highlite Academy Vimeo channel offers extensive Chimp tutorials with detailed descriptions of features and in-depth info on various functionalities of the light controllers in 6 different languages.
- Chimp training: the product specialists from the Highlite Academy host training courses for beginners and advanced users at Highlite headquarters but on-site as well.
- Chimp forum: at the Chimp forum the latest software version is always available to download, including the corresponding release notes. Here questions and answers from industry peers can be found. Chimp users and Chimp product specialists discuss features and offer ideas or solutions.
- Chimp service: if any questions remain after the manual has been read, the tutorials have been watched, the training has been received, the latest software has been installed and the forum has been checked, the Chimp Service can be contacted by email using chimp@highlite.com



Chimp Webpage



Chimp Tutorials



Chimp Training



Chimp Forum

∞ infinity

Infinity is a brand of Highlite International B.V.