

Photometric Report

41431 - H402 Furion, , Ordercode



REPORT SUMMARY

Output

Total Lumens:	32970 Lumen
Peak Intensity:	33605127 candela
Illuminance @ 5m:	1323098 lx
CRI:	76,4
CCT:	5519 K

Optical

Beam Angle (50%)	0,6 °
Field Angle (10%)	1,6 °
Cut-off Angle (2,5%)	1,9 °

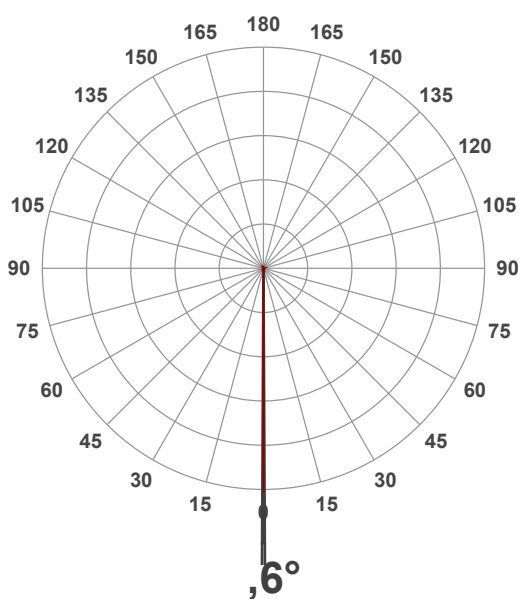
Conditions:

Power Supply:	224 V
Power:	577,8 W
Current:	2,63 A
Power Factor:	0,98

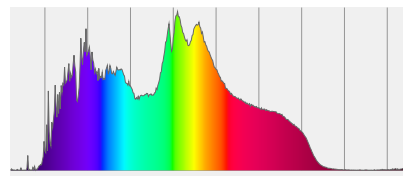


MEASUREMENTS

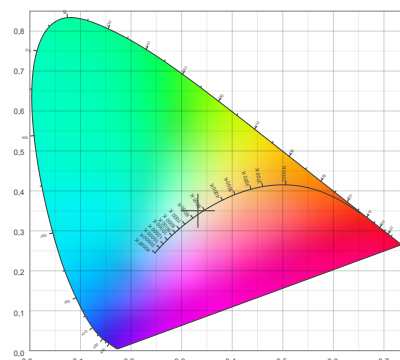
Angular Beam Distribution



Spectral Distribution



CIE 1931

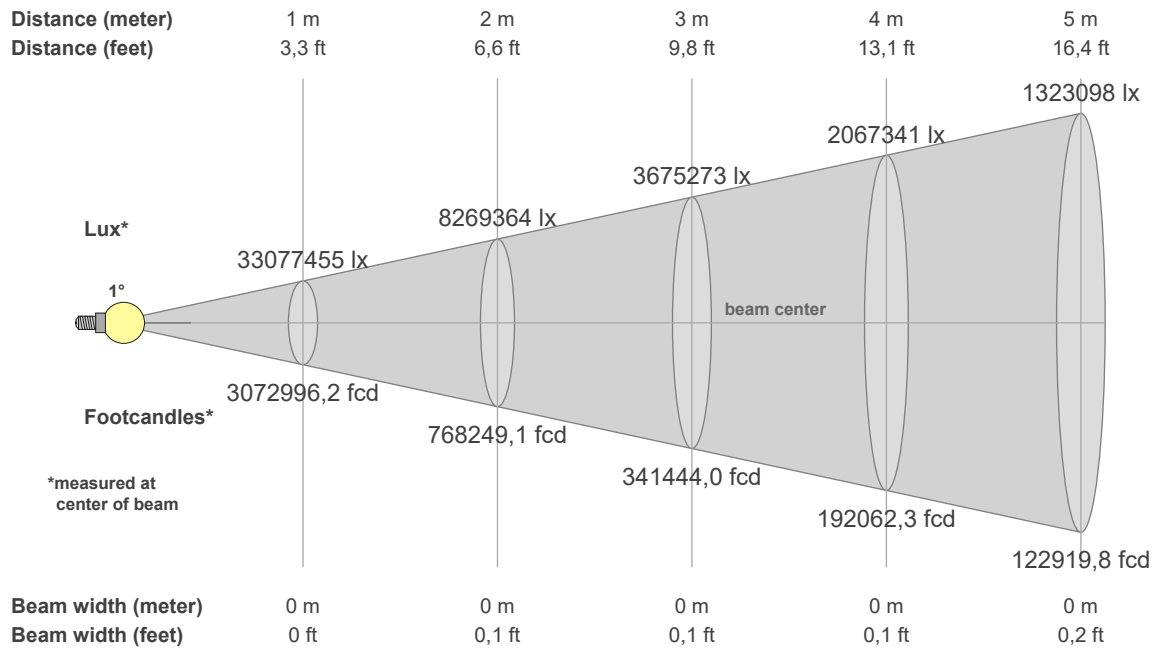


Photometric Report



41431 - H402 Furion, , Ordercode

BEAM DETAILS

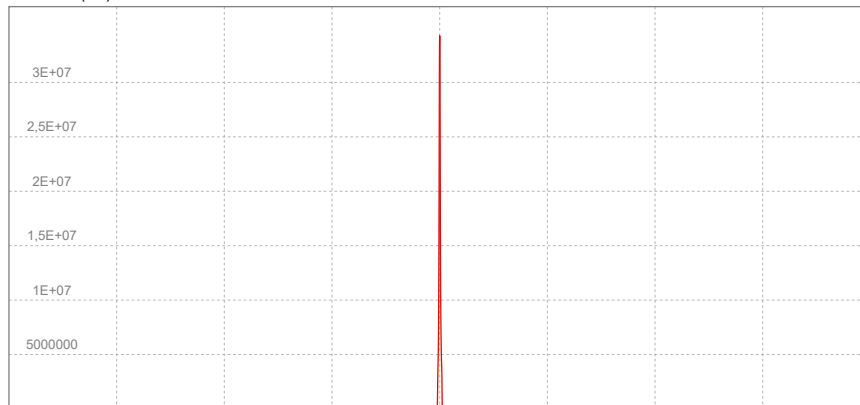


Beam Illuminances from 1-20m

1m	2m	3m	4m	5m	6m	7m	8m	9m	10m	11m	12m	13m	14m	15m	16m	17m	18m	19m	20m
3,3ft	6,6ft	9,8ft	13,1ft	16,4ft	19,7ft	23ft	26,2ft	29,5ft	32,8ft	36,1ft	39,4ft	42,7ft	45,9ft	49,2ft	52,5ft	55,8ft	59,1ft	62,3ft	65,6ft
33077455lx	8269364lx	3675273lx	2067341lx	1323098lx	918818lx	675050lx	516835lx	408364lx	330775lx	273367lx	229705lx	195725lx	168763lx	147011lx	129209lx	114455lx	102091lx	91627lx	82694lx
3072996,2 fcd	768249,1 fcd	341444 fcd	192062,3 fcd	122919,8 fcd	85361 fcd	62714,2 fcd	48015,6 fcd	37938,2 fcd	30730 fcd	25396,7 fcd	21340,3 fcd	18183,4 fcd	15678,6 fcd	13657,8 fcd	12003,9 fcd	10633,2 fcd	9484,6 fcd	8512,5 fcd	7682,5 fcd

Candela (cd)

Linear Distribution Diagram



Beam Angle (50%): 0,6 °

Field Angle (10%): 1,6 °

Cutoff Angle (3%): 1,9 °

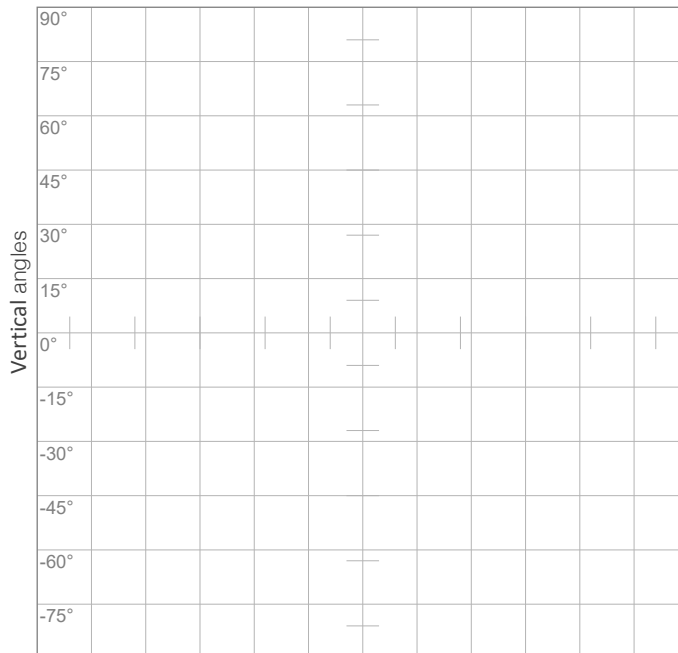
Angle °

Photometric Report

41431 - H402 Furion, , Ordercode



POLAR DIAGRAMS



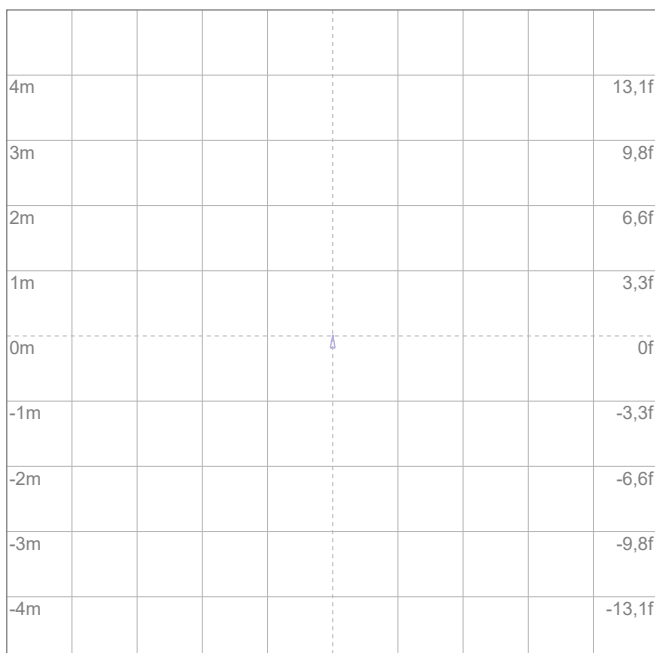
ISO candela diagram

10%	3307745 cd
20%	6615491 cd
30%	9923236 cd
40%	13230982 cd
50%	16538727 cd
60%	19846473 cd
70%	23154218 cd

Conditions:

Number of c-planes: 2

Candela at center: 33077455 cd



ISO lux diagram

3%	9923 lx
5%	16,5K lx
10%	33,1K lx
30%	99,2K lx
50%	165K lx

Conditions:

Number of c-planes: 2

Lux at center: 331K lx

Lux distribution on a surface when lamp is mounted at 10 meters from the surface.

Mounting height: 10 meters (33 feet)

Photometric Report



41431 - H402 Furion, , Ordercode

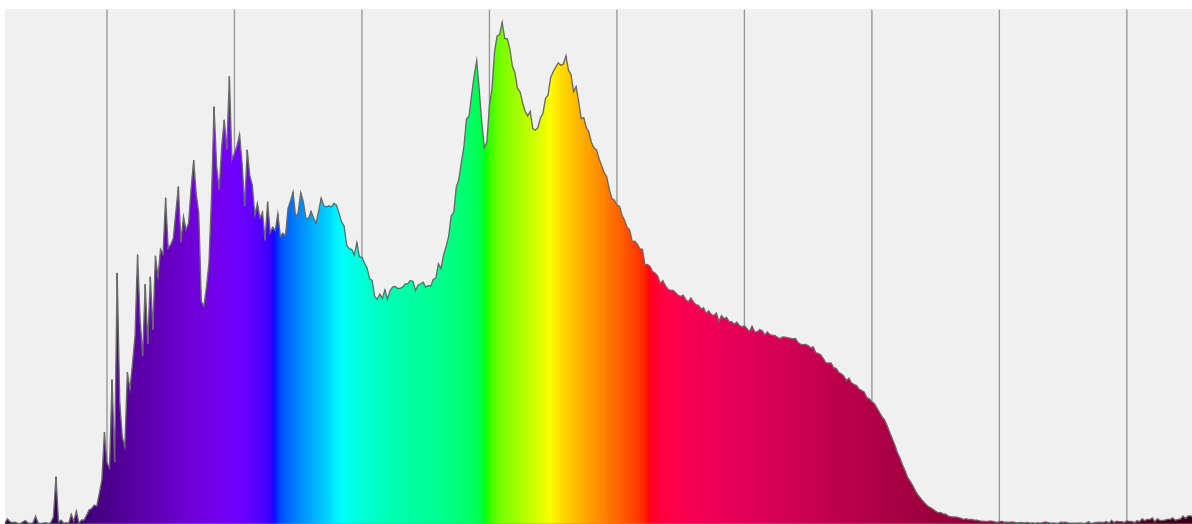
CHROMATICITY REPORT

Total Lumens: 32970 lm
Peak Intensity: 33605127 cd
Fixture Efficiency: 57 Lumen/Watt

Color Temperature: 5519 K
CRI: 76,4
CRI R9: -13,0
CQS: 74,8
TM-30 Rf: 81,1
TM-30 Rg: 90,6
 Δuv : 0,0015
1st Dominant Wavelength: 555 nm
2nd Dominant Wavelength: 580 nm



Spectral Distribution



Color

5519 K
CIE 1931 Coordinates:
X: 0,332 Y: 0,350

Color Temperature

5519 K

CRI

76,4

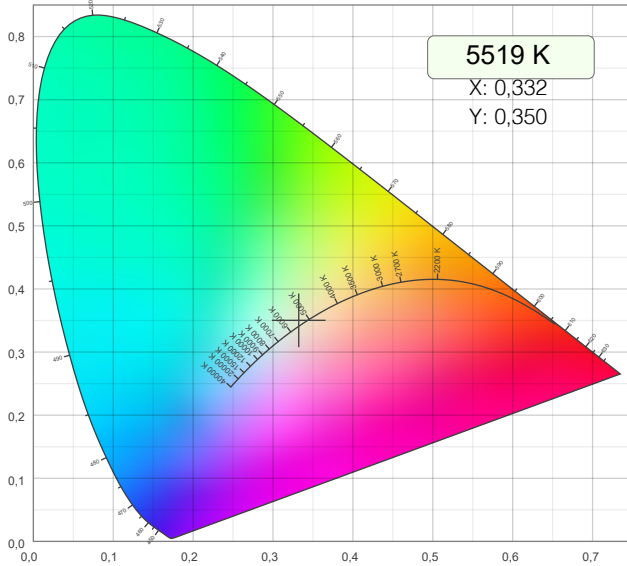
Photometric Report



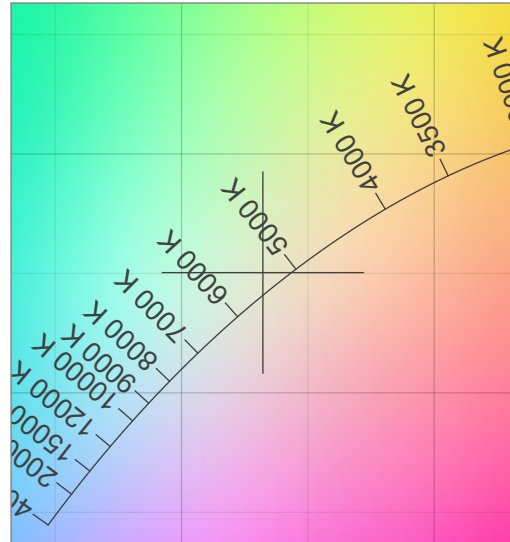
41431 - H402 Furion, , Ordercode

CHROMATICITY

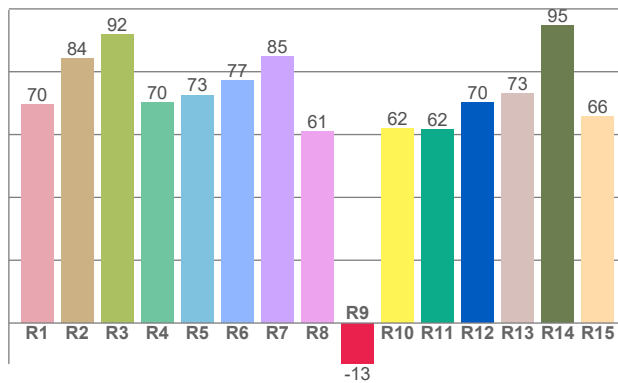
CIE 1931



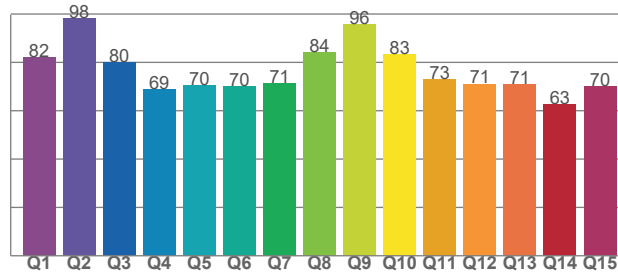
CIE 1931 - Detail



CRI: 76,4 (R1-R8)



CQSI: 74,8



Photometric Report



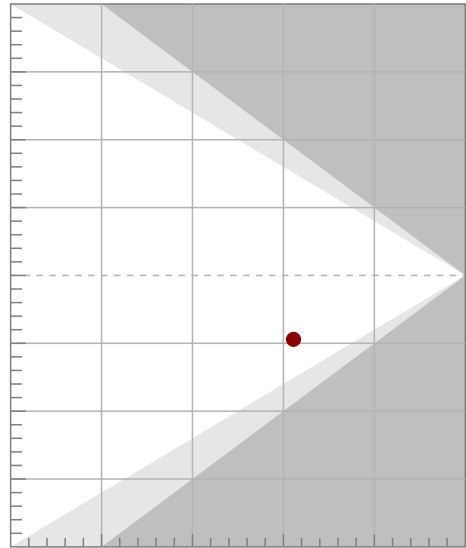
41431 - H402 Furion , Ordercode

TM-30-18 DETAILS

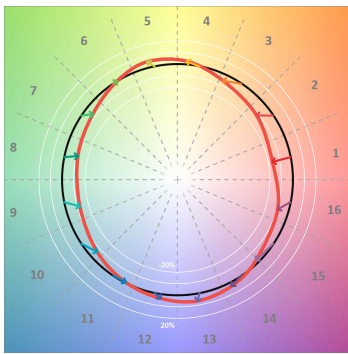
Rf 81,1
Fidelity index Rf

Rg 90,6
Gamut index Rg

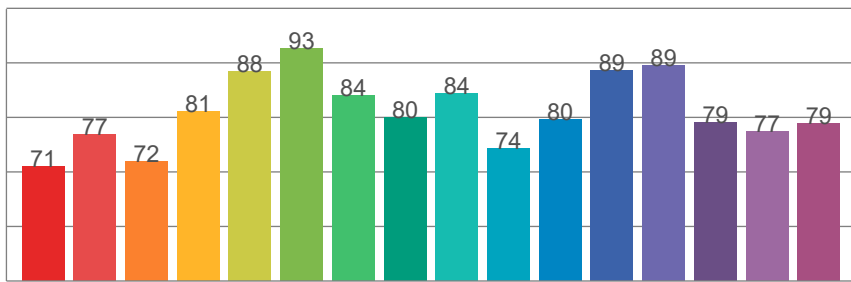
Hue Bin	Rf	Shifts (%)	
		Chroma	Hue
1	71	-16%	-1%
2	77	-12%	8%
3	72	-7%	15%
4	81	2%	12%
5	88	5%	6%
6	93	0%	-4%
7	84	-8%	-7%
8	80	-11%	-3%
9	84	-13%	6%
10	74	-7%	14%
11	80	-1%	12%
12	89	4%	6%
13	89	7%	-3%
14	79	3%	-12%
15	77	-4%	-20%
16	79	-10%	-8%



TM30-18 Color Vectors



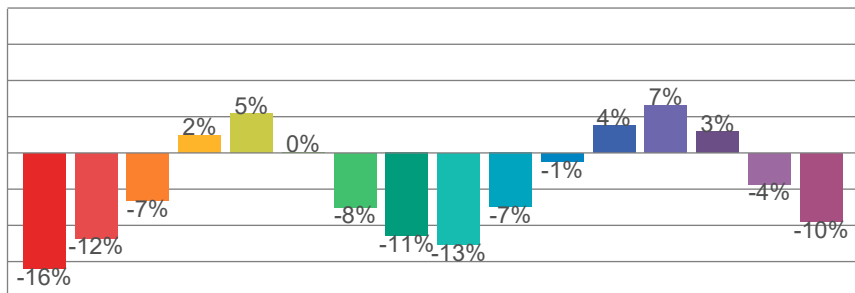
Rf by Hue Bin



TM30 Color Distortion



TM30 Chroma Shift



TM30 Color Fidelity Sample Chart

