



## APPLICATIONS

- Band P.A.
- Personal monitor
- Medium/large theatres
- Auditoriums
- Piano bar
- DJ
- Stage monitor
- Conference rooms
- Fixed installations in live clubs
- Pubs
- Gyms

## KEY FEATURES

- 2-way passive system
- Polypropylene molded enclosure
- FBT custom 15" LF woofer / 2,5" voice coil
- FBT 1" throat / 1,4" voice coil HF compression driver
- 400W RMS recommended amplifier
- 30° or 45° monitor taper
- M10 rigging points
- 90°H x 60°V constant directivity horn

## PRODUCT DESCRIPTION

The FBT X-LITE 15 series speakers feature lightweight, yet rugged gas injected molded polypropylene cabinet construction. Available in black finish the FBT X-LITE 15 series speakers modern cabinet appearance provides fixed installations with an elegant design that blends into any decor. The asymmetrical shape of the FBT X-LITE 15 cabinet also allows use as a floor stage monitor. The FBT X-LITE 15 is two way design incorporating an 15" low frequency woofer and 1" HF compression driver coupled to a 90°H x 60°V constant directivity horn. With a frequency range of 53Hz - 20kHz the FBT X-LITE 15 speakers provide high fidelity sound for both speech and music applications with a maximum SPL of 126dB. Ideal for medium-large fixed installations the FBT X-LITE 15 speaker have an impedance of 8 Ohm and the internal crossover is at a fixed frequency of 1,8kHz. The control panel features 2 x NL4 Neutrik speakon. 4 x M10 rigging points built into the cabinet along with the optional mounting brackets allow the FBT X-LITE 15 speaker to be surface mounted on walls or ceilings. A standard 1,38" speaker stand socket allows the FBT X-LITE 15 to be mounted on speaker stand. A front face steel grille protects the speaker from external damage.

## ELECTRONIC SPECIFICATIONS

System Type	2 Way
Recommended amplifier	400W RMS
Long term power*	200W
Short term power**	800W
Nominal Impedance	8 Ohm
Frequency Response	53Hz - 20kHz (@-6dB)
Maximum SPL cont/peak	123/126dB
Dispersion	90° H x 60°V
Crossover frequency	1,8kHz
Recommended ext. DSP	FBT DLM26

## PHYSICAL SPECIFICATIONS

Low Frequency Woofer	15" / 2,5" coil
High Frequency Driver	1" / 1,4" coil
Input Connectors	2 x speakon
Net Dimensions (WxHxD) inch	17,04 x 27,81 x 15,74
mm	433 x 706,5 x 400
Shipping Dimensions (WxHxD) inch	20,07 x 30,31 x 18,50
mm	510 x 770 x 470
Net Weight	45,19 lbs
Enclosure Material	polypropylene
Grille	Steel with powder coat black paint finish

\* 100 hour power test, IEC 268-5 standard (display the long term RMS voltage handling, using IEC filtered 6dB crest factor pink noise)

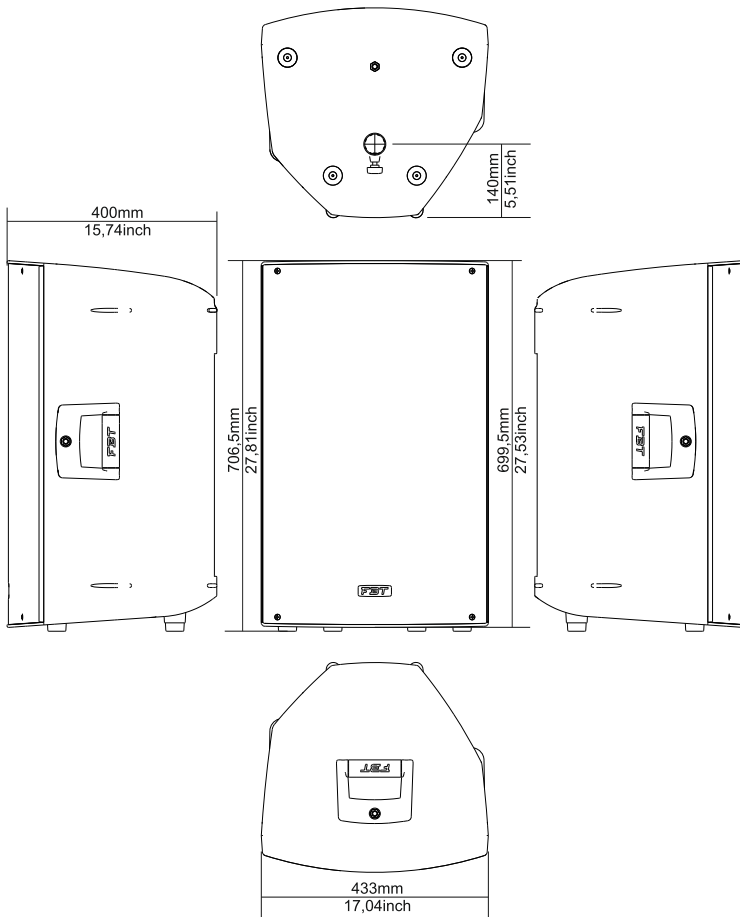
\*\* Based on peak level of 6dB crest factor random noise signal used for test.



SOUND REINFORCEMENT SPEAKER



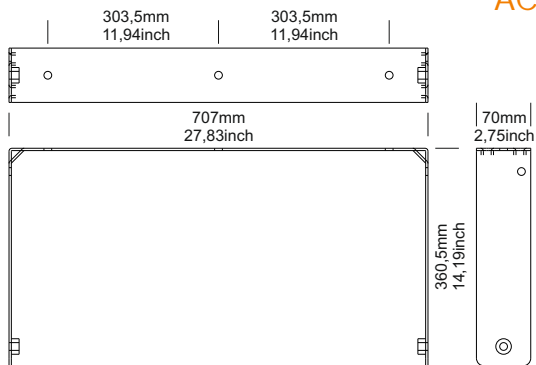
### DIMENSIONAL DRAWINGS



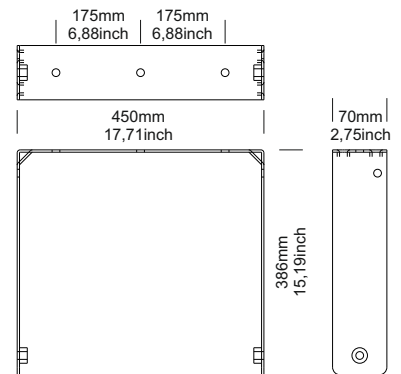
### CONTROL PANEL



### ACCESSORIES



**XL-UH15**  
Wall metal bracket to mount in horizontal position



**XL-UV15**  
Wall metal bracket to mount in vertical position