



# APPLICATION & ASSEMBLY INSTRUCTION

## NAC3FX-W-TOP-L | powerCON® TRUE1 TOP

### A. APPLICATION INSTRUCTION

#### APPLICATION:

- The powerCON TRUE1 system is certified as a connector with breaking capacity according IEC 60320, VDE 0625.
- It is intended for use as an appliance coupler and interconnection coupler.
- It serves to supply power to an appliance and from an appliance to other equipment.
- To be installed by qualified person only.

#### CONNECTOR ASSIGNMENT:

##### APPLIANCE INLET

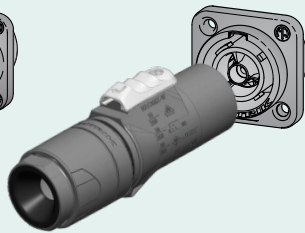
NAC3MPX-TOP  
NAC3MPX-WOT-TOP  
**Power IN** ▶



NAC3FX-W-TOP-L

##### APPLIANCE OUTLET

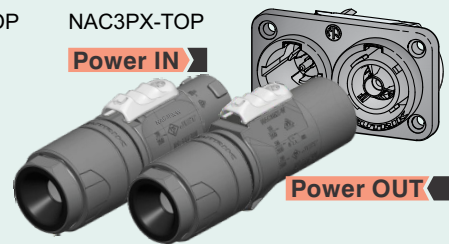
NAC3FPX-TOP  
NAC3FPX-WOT-TOP  
NAC3FPX-ST-TOP  
**Power OUT** ◀



NAC3MX-W-TOP-L

##### APPLIANCE INLET / OUTLET ▶ Combination

NAC3PX-TOP  
**Power IN** ▶



NAC3MX-W-TOP-L

▶ powerCON TRUE1 TOP line is full backward compatible with the preceding powerCON TRUE1 products.

#### Approval based:

**EUROPE**  
EN 60320-1



#### USA/CANADA

UL 60320-1  
CAN/CSA-C22.2 No. 60320-1



#### Rating:

250 V ac / 16 A

250 V ac / 20 A

#### Wire size:

2.5 mm<sup>2</sup>

14 - 12 AWG

#### Compliance confirmed with:

H07RN-F

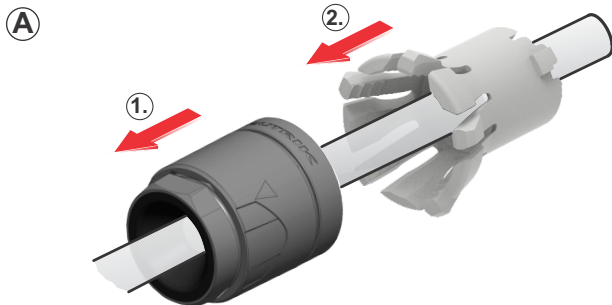
SOOW 12/3, SOOW 14/3

#### Cable O.D.:

10.0 - 16.0 mm (0.39 - 0.63")

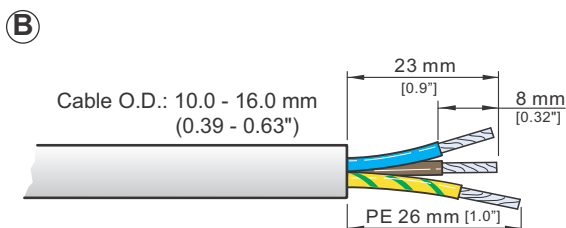
10.0 - 16.0 mm (0.39 - 0.63")

### B. ASSEMBLY INSTRUCTION

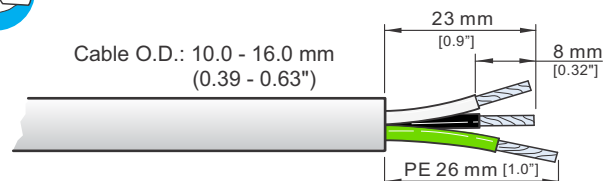


Place bushing (1) and chuck (2) over the cable.

Important: Chuck and Bushing cannot be placed over the cable after the assembly of the insert.



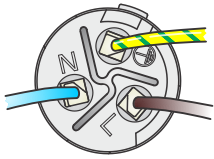
Prepare cable as shown.



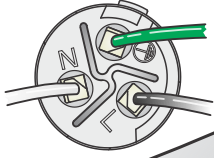
• **EUROPE**  
(EN 60320-1)

• **USA/CANADA**  
(UL 60320-1 / CAN/CSA-C22.2 No. 60320-1)

**C EUROPE**



**USA/CANADA**



Torx size T8  
Torque Value 0.7 Nm  
(6.2 inch pound)

Slide the cable into the contacts and clamp with the screw with Torx size T8.

Wiring	EUROPE	USA/CANADA
L ⇒	brown	black
N ⇒	blue	white
⊥ ⇒	green/yellow	green

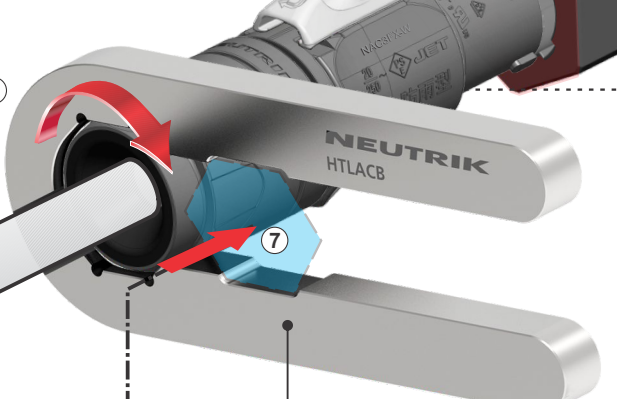
**D**

**Important:**  
Push and turn simultaneously.

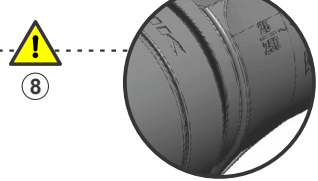


Position chuck (3) on insert (1).  
Slide insert (1) with chuck (3) together into housing (2).  
**Important:** Align the chuck by positioning the nose into keyway.

**E**



Slide bushing (4) over chuck (3). Hold the connector with the NEUTRIK tool (5) and tighten bushing with the NEUTRIK tool (6) as shown.



For an exact mounting position use a torque wrench with 19 mm (3/4 inch) hex bit (7) and tighten it with 2.0–2.5 Nm (18–22 inch pound).

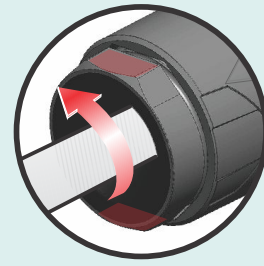
**Important:** Black O-ring to be covered by the bushing to achieve IP protection (8).

Neutrik HTLACB  
Torque Value 2.0 - 2.5 Nm  
(18 - 22 inch pound)

NEUTRIK tool:	(5)	HTLACA
	(6)	HTLACB

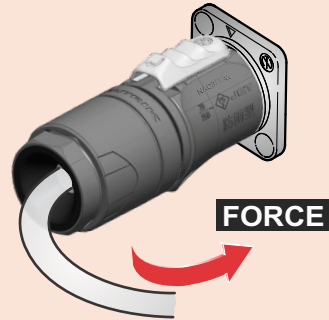
**FOR DISASSEMBLY!**

1. Use the Neutrik tool HTLACB.
2. Position the tool on the surfaces and open the clamping sleeve.



**CAUTION**

To ensure protection category, do not expose the connection to bending forces (e.g. do not attach loads to the cable, no free-dangling cable windings etc.).



**SAFETY WARNING**

For safety and certification reasons the connector must be replaced in case of any broken parts or excessive wear and tear.

Find more details of powerCON TRUE1 TOP on [www.neutrik.com](http://www.neutrik.com).



Neutrik AG LI T: +423 / 237 24 24 F: +423/232 53 93  
 Neutrik USA Inc. USA T: +1 704 / 972 3050 F: +1 704/438 9202  
 Neutrik (UK) Ltd. UK T: +44 1983 / 811 441 F: +44 1983/811 439  
 Neutrik Vertriebs GmbH DE/NL/AT/DK T: +49 8131 / 280 890 F: +49 8131/280 830

Neutrik France FR T: +33 1/4131 6750 F: +33 1/4131 0511  
 Neutrik Tokyo Ltd. JP T: +81 3/3663 4733 F: +81 3/3663 4796  
 Neutrik Hong Kong Ltd. HK T: +852/2687 6055 F: +852/2687 6052

Draft. Nr.: BDA 624 V2 | Update: 2021-11-18 | Data subject to change without prior notice. © 2021 NEUTRIK®, NEUTRIK® / powerCON® are registered trademark of Neutrik AG. ALL RIGHTS RESERVED.