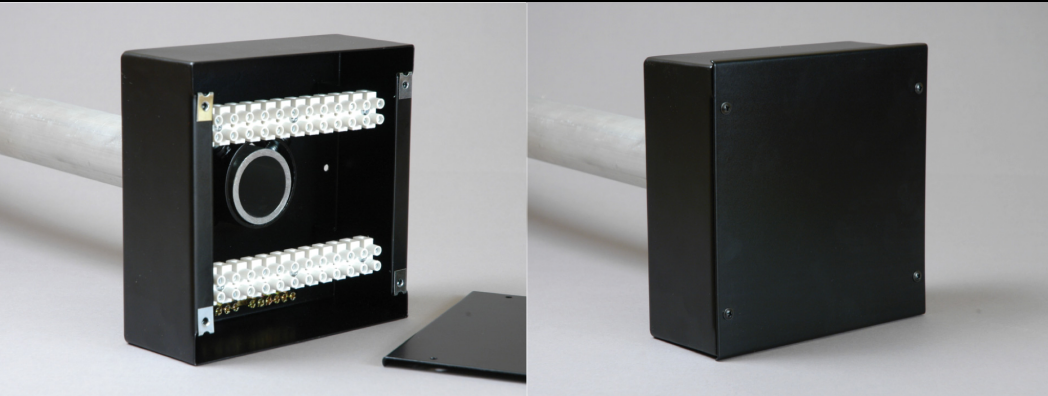


End Box[®] for Internally Wired Lighting Bars



For technical help and advice:
Call +44 (0) 1392 823040

www.robolights.com

Robolights:
 5 G.D. Units, Cofton Road
 Marsh Barton, Exeter, Devon
 EX2 8QW

The Robolights[®] End Box[®] is designed to be fitted to the end of an internally wired lighting bar (IWB) providing a neat termination box where the circuits of the IWB can connect with fixed wiring or multicore cables.

Designed to fit to 'standard' 48mm aluminium scaffold tubing using its own internal tube clamp, the End Box is supplied with all necessary fittings and terminals to connect up to 12* individual circuits. The End Box is manufactured from mild steel and is finished in durable, satin black powder coat paint.

*An additional 6 way terminal kit can be fitted to allow up to 18 circuits in total.

End Box Features

- Mild steel construction
- Compact size - 180 x 180 x 72mm
- Durable powder coat finish
- Built in scaffold tube clamp
- Supplied complete with terminals for up to 12 circuits
- Additional 6 way terminal set available
- Earth terminal bar
- Individually packed with full fitting instructions

End Box Technical Information:

Enclosure material	18 SWG mild steel
Dimensions	180mm x 180mm x 72mm
Weight	1.6kg (complete)
Tube Clamp	Accepts 48.3mm OD tube
L&N terminal rating	380VAC, 20A
L&N terminal cable capacity	6mm CSA
L&N terminal material	Brass with steel screws
Earth terminal bar cable capacity	1 x 25mm (max) and 8 x 16mm (max) CSA

End Box[®] for Internally Wired Lighting Bars

End Box Dimensions:

