

HexaPAR

40W COB LED RGBW PAR Light

Item ref: 154.070UK

User Manual

Please read through this manual thoroughly before use, any damage
Caused by misuse of product will not be covered by warranty.



Stylish and sturdy, this Retro-style hexagonal PAR light is fitted with a bright 40W RGBW COB LED that produces an array of 15 eye-popping colours. The unit can be controlled by auto, sound-to-light, master/slave programs or via 5/7/9 channel DMX for more precise control.

In the box:

Your HexaPAR should arrive with you in a single carton in good condition. The carton should contain 1 x main unit, 1x Dual mounting bracket and thumbscrews, 1 x UK IEC mains lead and 1 x user guide.

Warning:

To prevent risk of fire or electric shock, do not expose the unit to rain or damp environments. In the event of a spillage, disconnect the mains and allow the unit to dry out naturally. Qualified personnel should then check the unit before continuing use.



Please do not open cover, contains high voltage. This product is not serviceable or repairable by the end user. Please refer to qualified personnel for service and repair.

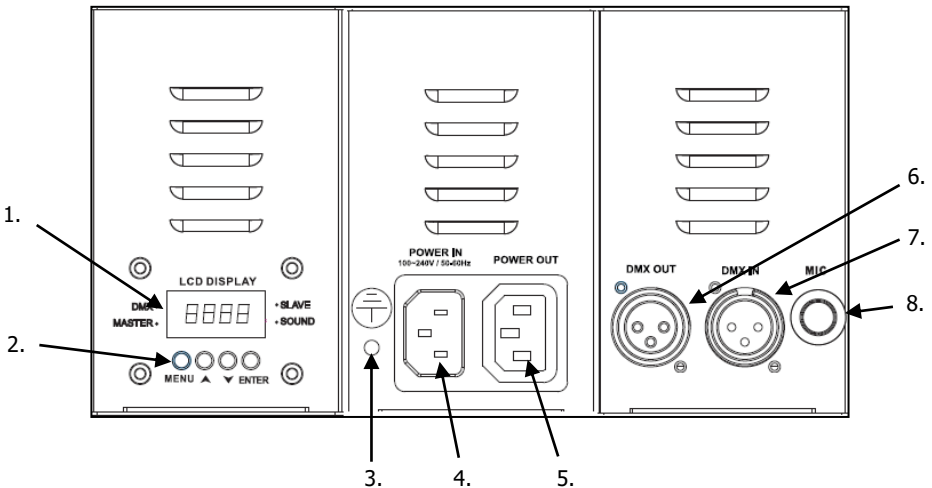


Placement:

- Keep away from damp or dusty environments.
- Ensure adequate airflow around the fixture housings.
- Ensure adequate access to controls and connections.

Cleaning:

- Use a soft cloth with a neutral detergent to clean the casing as required.
- Use a vacuum cleaner to clear ventilation grilles of any dust or debris build-ups.
- Do not use strong solvents for cleaning the unit.



Side panel controls:

- | | |
|--------------------------------|---------------------|
| 1. LCD display | 5. IEC power output |
| 2. Manual control buttons | 6. DMX output |
| 3. Earth screw (do not remove) | 7. DMX input |
| 4. IEC power input | 8. Microphone |

Manual control menu:

Press the **"MENU"** button to enter the settings menu.
 Press **"UP"** and **"DOWN"** buttons to navigate through various setting functions.
 Press **"ENTER"** button to save the desired setting.

Menu	Number range	Function and description
Addr	A001-A512	DMX512 address setting
ChAn	5Ch, 7Ch, 9Ch	DMX channel selection
nASL	nASt	Master mode
	SLAv	Slave mode
CoLo	Co1-Co15	Static colour modes
	Stro0-Stro100	Strobe effect speed select (slow to fast)
JUnP	JU1-JU100	Auto mode (slow to fast)

	Stro0-Stro100	Strobe effect speed select (slow to fast)
Fade	FA0-FA100	Fading mode (slow to fast)
	Stro0-Stro100	Strobe effect speed select (slow to fast)
nAnU	Stro0-Stro100	Strobe effect speed select (slow to fast)
	dinn0-din100	Master dimmer
	red0-red100	Red dimming (0-100%)
	Gree0-Gree100	Green dimming (0-100%)
	blue0-blue100	Blue dimming (0-100%)
	Uhit0-Uhit100	White dimming (0-100%)
Soun	on/off	Sound control mode (on/off)
Sens	Sens1-Sens100	Sound sensitivity (1-100%)
dinc	halo	Halogen dimmer
	Li	Linear dimmer
	eo	Exponential dimmer
	Lo	Logarithmic dimmer
	SC	S-Curve dimmer
blnd	no	LED on
	yes	Blackout
Led	on	Display on
	Off	Display off
disp	dsip	Display inverse (on/off)
test	test	Self-testing mode
temp	0-255	Unit temperature display
fhrs	0-9999	Fixture run time (hours)
uer	u-11	Software version V11

DMX mode:

The HexaPAR can be controlled by DMX signal, simply connect the DMX signal source to the DMX input on the unit via a balanced XLR lead. Extra fixtures can be controlled by the same DMX signal by looping through the DMX out on the unit. To enter DMX mode, select Addr from the menu and confirm the correct start address by using the "UP" and "DOWN" buttons and "ENTER" to confirm.

This unit has 4, 6 or 8 DMX channels as indicated in the table below:

Channel	5 Channel Mode	7 Channel Mode	9 Channel Mode
CH1	1-255 Master dimmer	1-255 Master dimmer	1-255 Master dimmer
CH2	1-255 Red dimmer	0-007 LED on, 008-015 LED off, 016-131 Strobe (slow to fast), 132-139 LED on, 140-181 Fast off slow on (slow to fast), 182-189 LED on, 190-231 Fast on slow off (slow to fast), 232-239 LED on, 240-247 Lightning strobe, 248-255 LED on	0-007 LED on, 008-015 LED off, 016-131 Strobe (slow to fast), 132-139 LED on, 140-181 Fast off slow on (slow to fast), 182-189 LED on, 190-231 Fast on slow off (slow to fast), 232-239 LED on, 240-247 Lightning strobe, 248-255 LED on
CH3	1-255 Green dimmer	1-255 Red dimmer	1-255 Red dimmer
CH4	1-255 Blue dimmer	1-255 Green dimmer	1-255 Green dimmer
CH5	1-255 White dimmer	1-255 Blue dimmer	1-255 Blue dimmer

CH6		1-255 White dimmer	1-255 White dimmer
CH7		0-050 Linear dimmer, 051-101 Exponential curve dimmer, 102-152 Logarithmic curve dimmer, 153-204 S-Curve dimmer, 205-255 Halogen effect dimmer	0-005 No function, 006-125 Colour select 1-15, 126-128 Colour stop, 129-192 Colour jump (slow to fast), 193-255 Colour fade slow to fast
CH8			0-005 Sound control off, 006-255 Sound sensitivity (low to high)
CH9			0-050 Linear dimmer, 051-101 Exponential curve dimmer, 102-152 Logarithmic curve dimmer, 153-204 S-Curve dimmer, 205-255 Halogen effect dimmer

Specifications:

Power	100 - 240Vac, 50/60Hz (IEC)
Power consumption	40W
Fuse rating	F3A
LED power	40W COB RGBW LED
DMX channels	5CH, 7CH and 9CH
Beam angle	40°
Connections	Power in/out (IEC), DMX in/out (3pin XLR)
Dimensions	159 x 215 x 200mm
Weight	1.8kg

Troubleshooting:

No power (mains)	Check IEC lead and fuse (if fuse continually blows, refer to your dealer)
	Check the unit is charged and the power switch is in the On position
No light output	Check control panel mode settings
	Check DMX settings from controller (dimmer levels, blackout etc.)
Unresponsive to DMX	Check that unit is in DMX mode and ensure DMX address remains lit to confirm receiving DMX signal
	Check DMX controller is not set to blackout
	Check DMX controller is on correct fixture/page
	Check master dimmer value
	Check correct DMX address is set
Overheating/cutting out	Check DMX connection and leads
Overheating/cutting out	Ensure adequate ventilation and unit is not too close to a heat source



This product is classed as Electrical or Electronic equipment and should not be disposed with other household or commercial waste at the end of its useful life. The goods must be disposed of according to your local council guidelines.

Errors and omissions excepted.

Copyright© 2024 AVSL Group Ltd, Unit 2 Bridgewater Park,
Taylor Road, Trafford Park, Manchester. M41 7JQ.

www.avsl.com

AVSL (Europe) Ltd, Unit 3D North Point House,
North Point Bus. Park, New Mallow Road, Cork, Ireland.

154.070UK User Manual