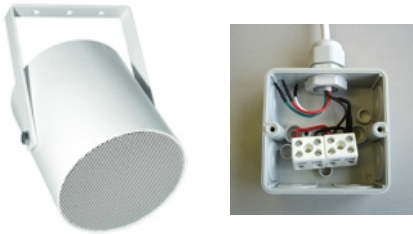


Certificate No.: 1438/CPD/XXXX



 EN 54-24
certified

The Apart-Audio EN-MP5T20-W is a compact and stylish sound projector made of powder coated aluminium (RAL 9010 equivalent), equipped with a high efficiency full range driver and a multitap 100 volt transformer, all certified according EN 54-24.

The unit is equipped with a ceramic speaker line connector block, junction box, thermal fuse and stainless installation bracket.

The highlights are: Ip65, aluminium cabinet, junction box, thermal fuse, ceramic connector block.

Not included: cable gland for the cable from the power amplifier to the junction box.

Mounting instructions

1. Install the bracket and junction box on a wall or ceiling.
2. Connect the speaker cable to the power amplifier.
3. The required power can be changed by connecting another transformer wire. See the label on the junction box. Default power = 10 watts. The transformer wires not in use must be electrically isolated to avoid short circuits.



Safety precautions

- Keep this manual for future reference.
- When making the hole in your mounting panel to mount the Apart speaker, make sure there is sufficient clearance behind the panel (no obstructions like A/C channels, power lines etc, ...).
- Take care of your speaker wires, they should be free of damage. Damaged speaker wires may result in poor sound quality and can damage amplifiers.
- Only use accessories specified by the manufacturer.
- Make sure the mounting panel can support the speaker's weight.
- Use a sufficient amount of speakers to avoid dead spots.
- No main power shall be connected to the loudspeakers, doing so will damage the speaker.
- This apparatus should only be serviced by qualified personnel. If not serviced by qualified personnel, warranty may be void.
- Use cable of the right gauge, certainly for long runs.
- Use cables with clear color indication and maintain polarity throughout the whole system.
- Avoid loud feedback from microphones, this can damage your speaker.
- Please check the unit's condition after unpacking. If the outside of the carton box has been damaged, inform your shipper immediately.

Warranty info

Apart Audio warrants this product to be free of defects in material and workmanship for a period of one year for parts and for a period of one year for labor from the date of original end-user purchase. This warranty is valid only for the original end-user and cannot be transferred. During the warranty period Apart Audio or one of its authorized service partners shall either repair or replace any product, free of charge, that proves to be defective on inspection by Apart Audio or its authorized service representative. This warranty does not include, damages or product faults due to abuse, misuse or faulty installation.

Legal info

Audioprof nv
Industriepark Brechtsebaan 8 bus 1, 2900 Schoten - Belgium
Company names, product names and trademarks are property of their respective owners. Apart-Audio specifications are subject to change without notice.

Technical specifications

Speaker type	coated paper cone
Woofer size	5 inch
Dimensions (Ø x d)	167 x 163 mm
Colour	RAL 9010
100 volt transformer power taps	20 / 15 / 10 / 5 watts
Frequency response (-10 dB, IEC268-5)	146 - 22000 Hz
Frequency range	120 - 23000 Hz
Dispersion angle -6 db, 500 Hz / 1 kHz / 2 kHz / 4 kHz	360° / 240° / 115° / 50°
SPL 1W / 1m (IEC268-5)	92.1 dB
SPL 1W / 4m (IEC268-5)	80.1 dB
SPL Pmax / 4m (IEC268-5)	93.1 dB
SPL P max / 1m (IEC268-5)	105.1 dB
Sensitivity EN54-24, 1W / 4m	78.1 dB
IP classification	65
Chassis material	aluminium
Grille material	steel, powder coated