

EasyLighting Manual:

Download in App-Store.



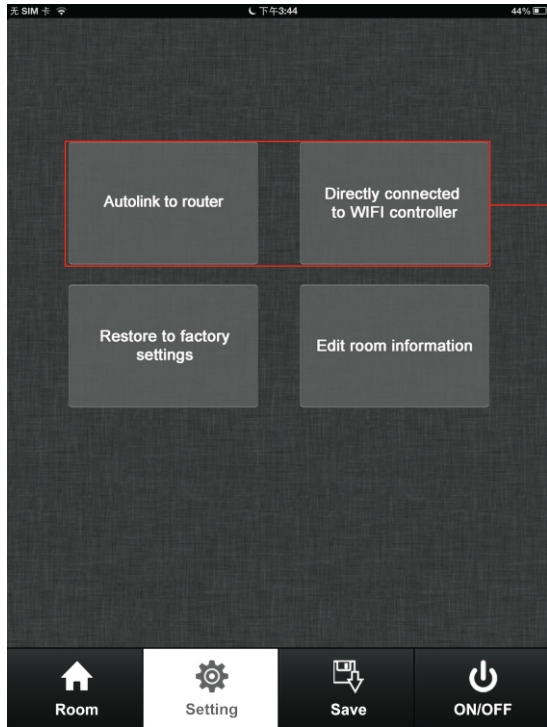
Configure

There are two different ways to configure smart phone connect to convertor:

1. Autolink to router

2. Directly connected to WIFI controller

We just need choose any one according different situation.



Two different ways to configure smart phone connect to convertor:
1. Autolink to router
2. Directly connected to WIFI controller


P1

Autolink to router

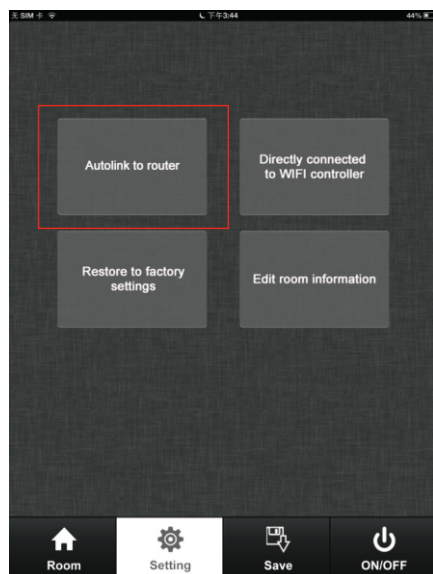
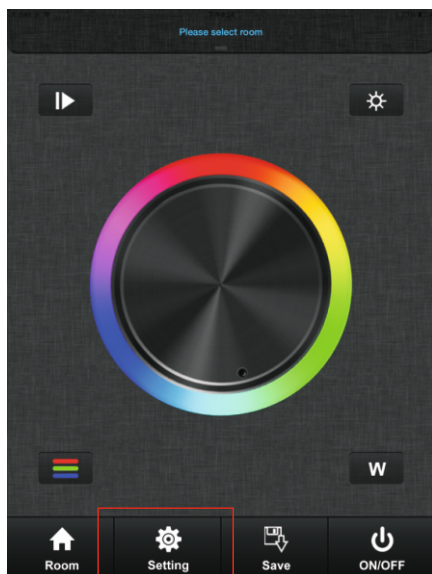
Most popular way when need to control LED lighting by own house's WIFI.

1) Search and connect the EASYCOLOR (WIFI controller default password 1234)

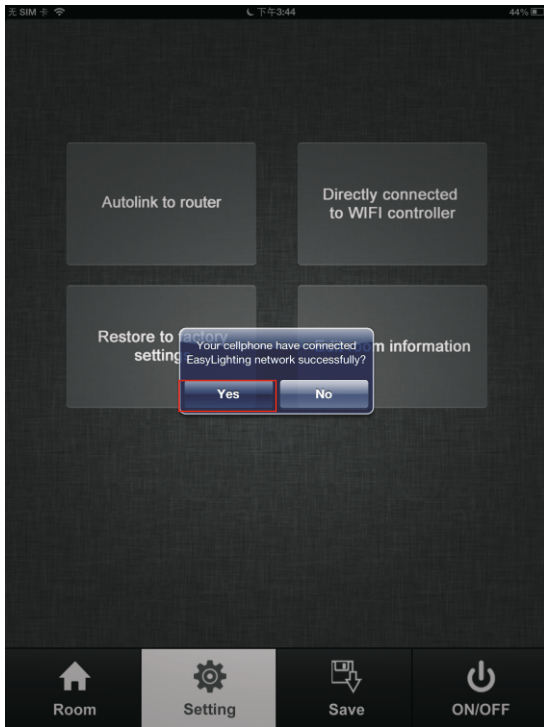
2) Enter easylighting application

3) Short press setting button  (P2)

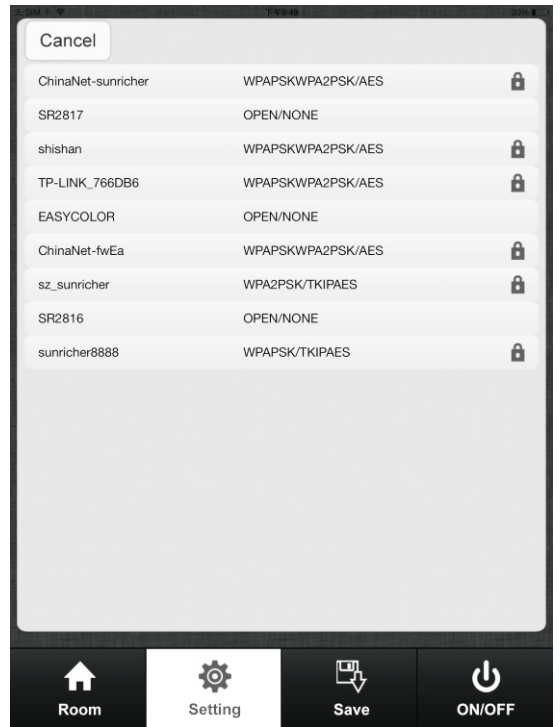
4) Short press Autolink to router  (P3)



5) Press yes , it will search all the router around automatically (P4.P5)



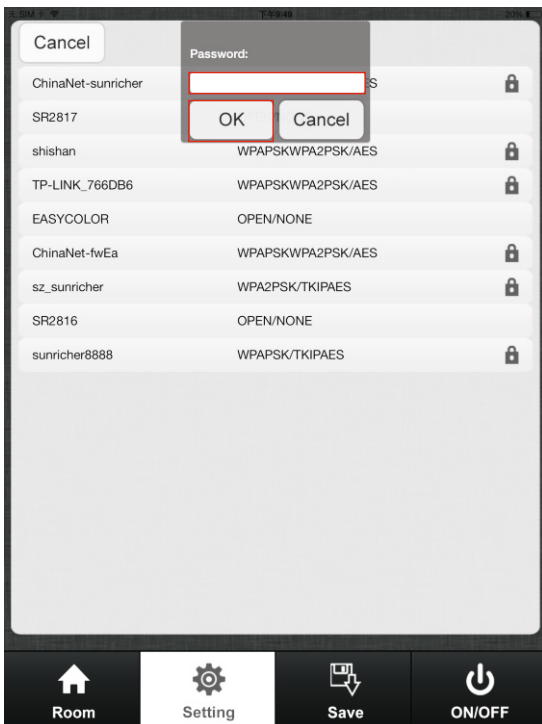
P4



P5

6) Choose router we want connect

7) Enter password and then press OK (P6.P7)



P6



P7


Directly connect to WIFI controller

Be used without house's wifi

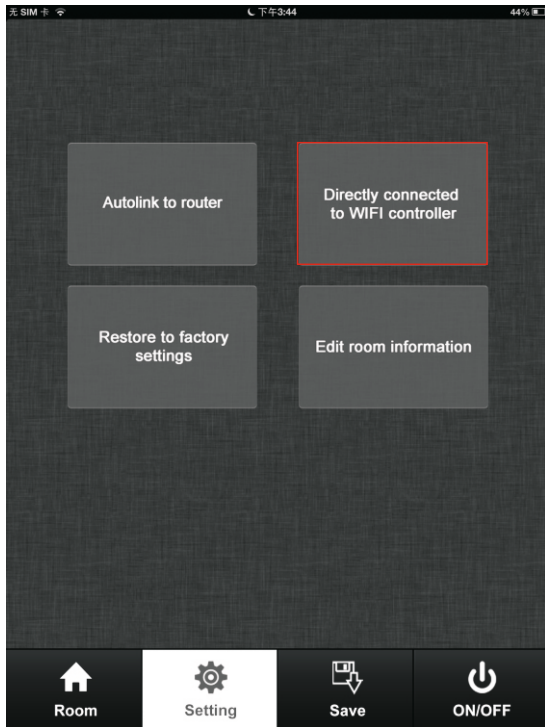
1) Search and connect the EASYCOLOR (WIFI controller default password 1234)

2) Enter easy lighting application

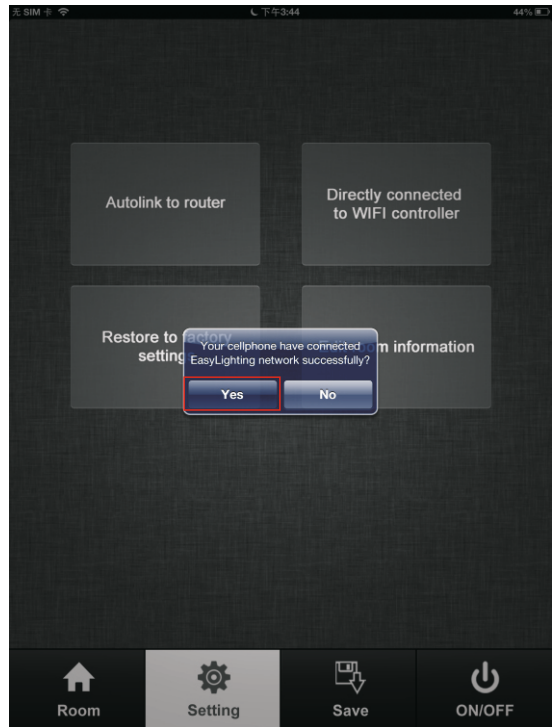
3) Short press setting button 

4) Press  (P8)

5) Press yes  (P9).



P8



P9



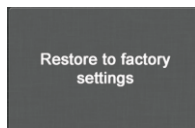
Restore to factory setting

When we control WIFI by exist network, the mold of WIFI controller was changed. Easylighting cannot be search in network list unless we reset the router. Then we can use this button to restore the WIFI controller to factory setting. (This function only is use when using exist WIFI network).

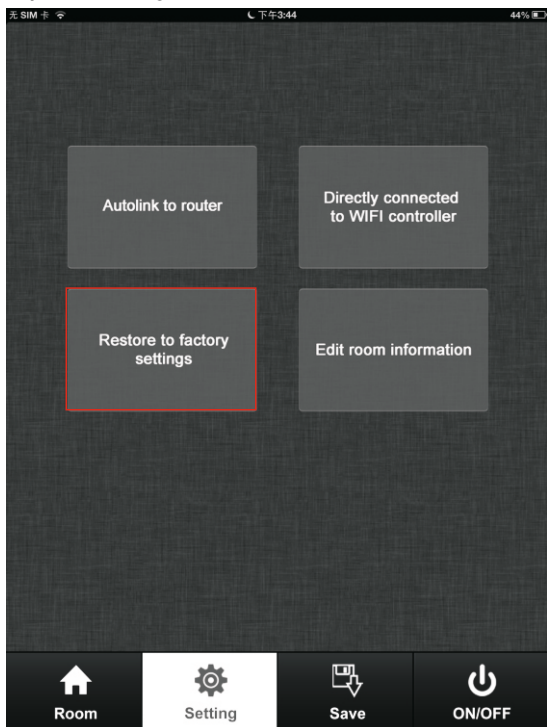
1)Connect exist WIFI and make sure WIFI controller already be configure to this network

2)Enter the setting interface

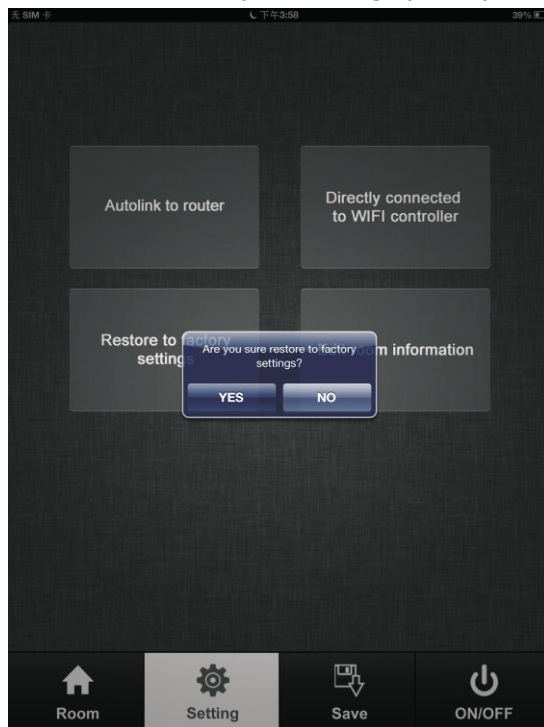
3)Short press Restore to factory setting .(P10)



3)Press yes; it will indicate successful restore factory setting.(P11)

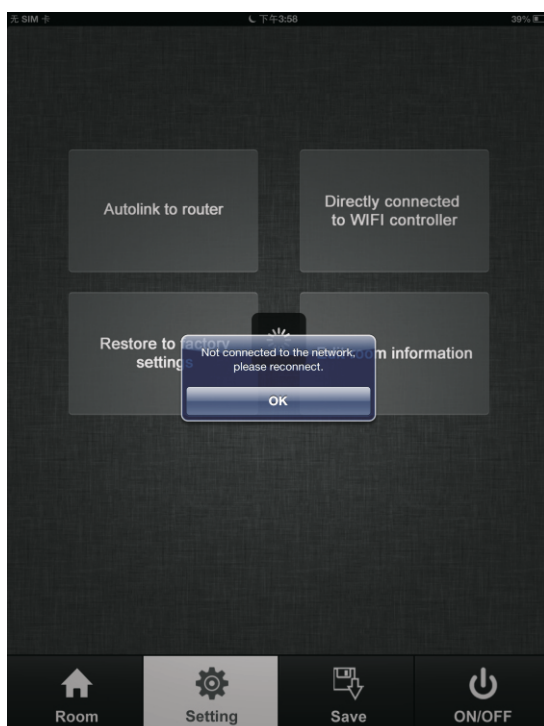


P10




P11

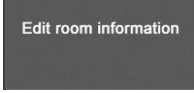
3)Press ok, after around 1 minute, Easylighting will can be found in network list again.(P12.P13)

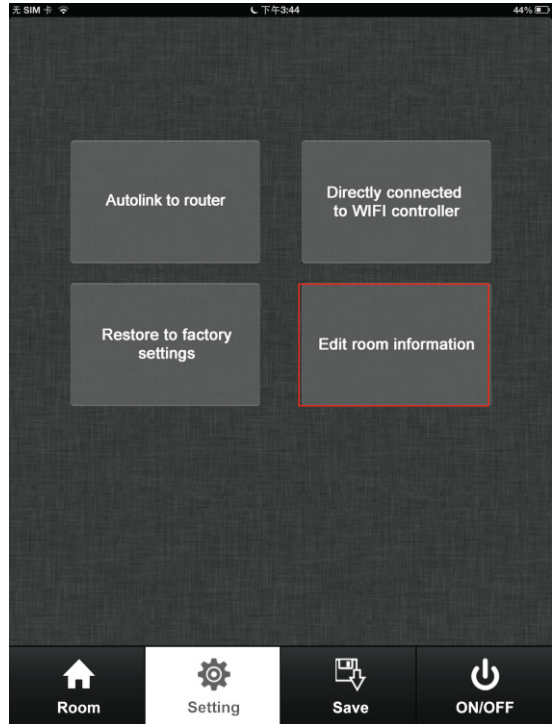


P12

Room editing

1.Short press setting button  (P14)

2.Short press Edit room information button  (P15)
there will be room editing page as(P16)



P14

P15



P16

a. Edit room/zone name

- 1) Press Edit button **Edit** (P20)
- 2) Click the words ("bedroom" for example)
- 3) Clean the old name and enter a new name (zone 1 for example)
- 4) Press save button **Save** (P21)



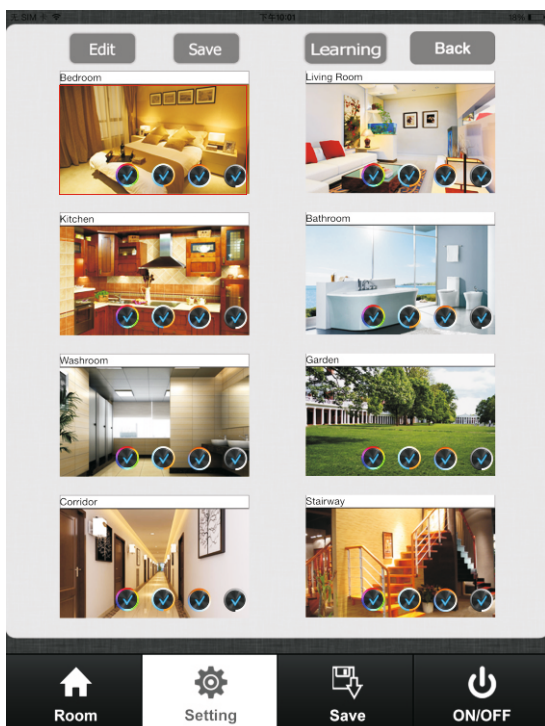
P20



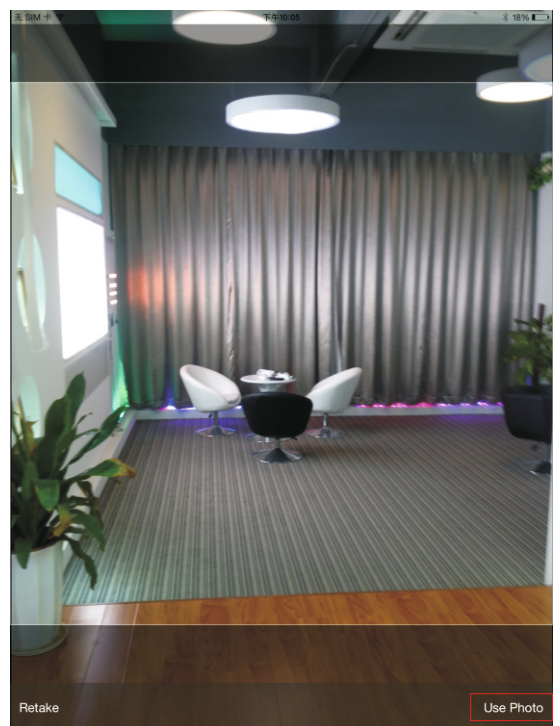
P21

b. Change picture for the room

- 1) Press Edit button **Edit** (P20)
- 2) Short press the middle of the room picture (P22)
- 3) Camera will be opened automatically
- 4) Take a picture
- 5) Click use photo **Use Photo** (P23)
- 5) Press save button **Save** (P22)





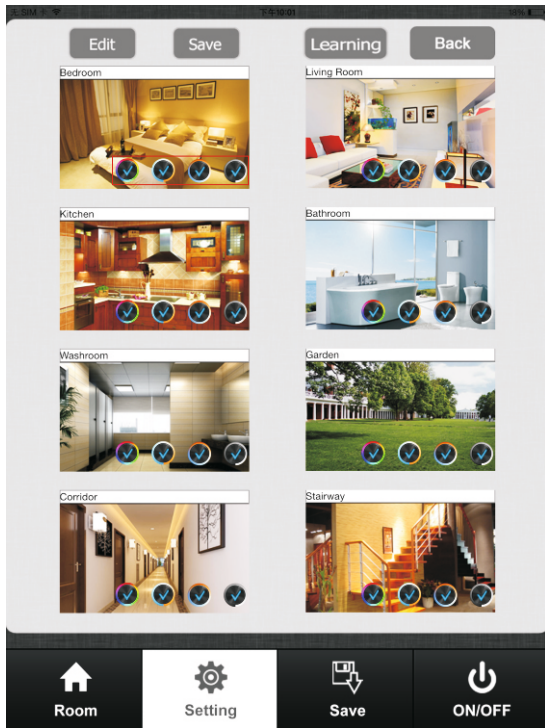
P22







P23


c. Edit color wheel for corresponding LED lighting

1) Press Edit button  there will be four different color wheel in lower right 




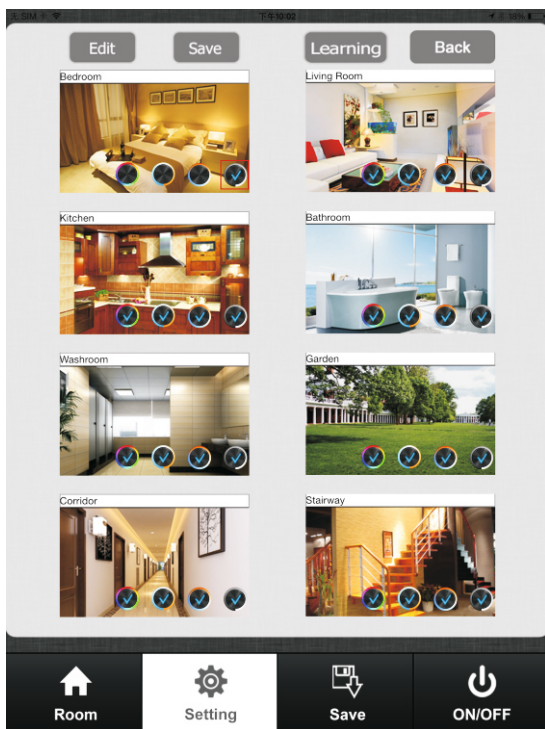
-  For RGBW LED lighting
-  For CDW LED lighting
-  For CCT led lighting
-  For single color LED lighting

P24

2) Cancel the mark for other three color wheels and keep one (take single color as example)  (P25)

3) Press save 

4) Choose this zone there will be one directly enter corresponding color wheel 



P25



P26


Attention

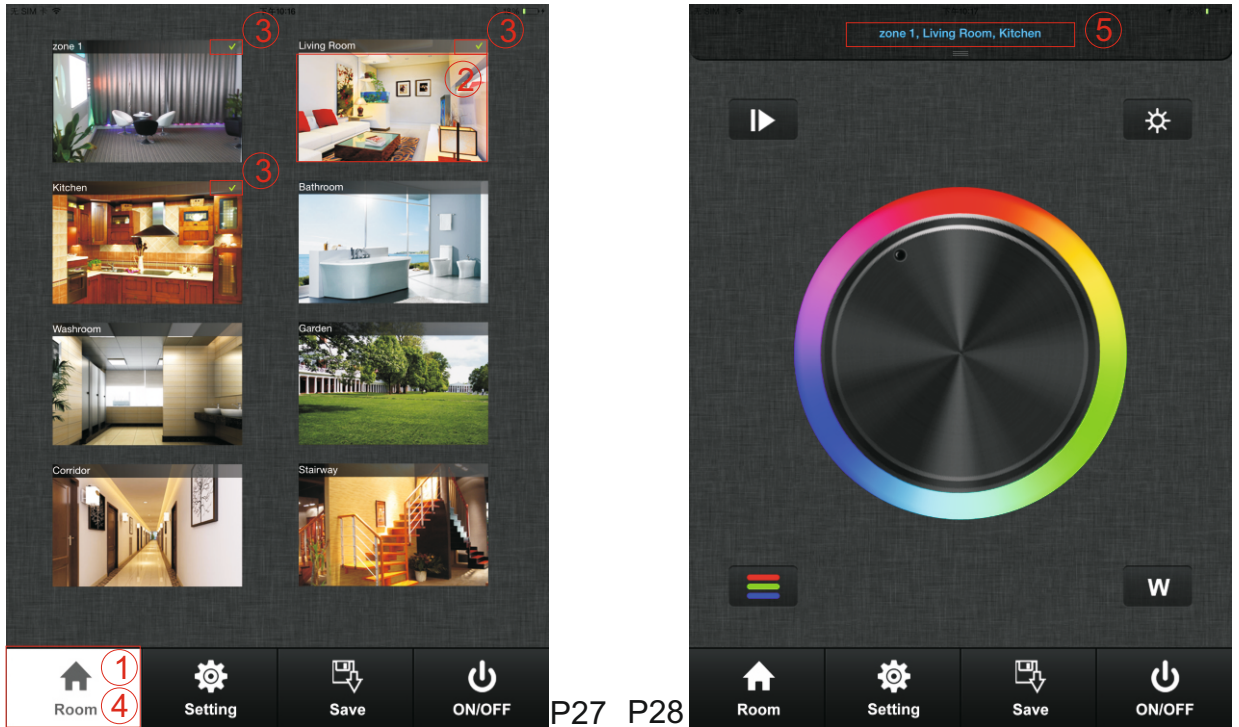
Different zones which were edited to different color wheel cannot be chose at same time.


Different Zones which were edited to same color wheel or did not be edited any color wheel can be selected at same time.

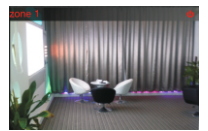
Manual

a. Room button(P27,P28)

- 1 Choose Room button 
- 2 Short press middle of zone picture
- 3 Mark on the upper right side of room picture to indicate choose successfully, multiple rooms can be choose at same time
- 4 Press room button again be confirm the rooms' selection
- 5 Upper area will indicate room's name we selected.



(P29)Long press middle of the room picture to on/off corresponding rooms/zones. There will be a red off mark  on the right upper side of the room picture when the room is switched off.

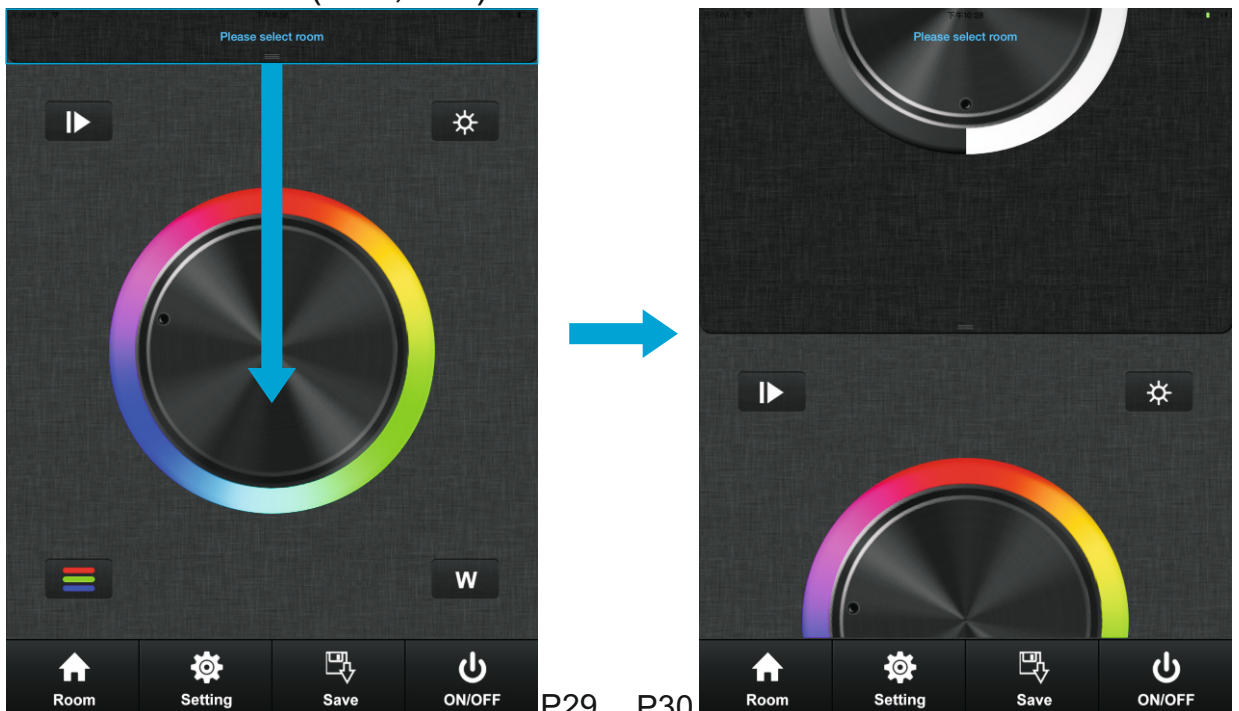


P29

b. color wheel

There will be four different color wheels we can select if we did not edit the room: RGB, CDW, CCT, Single color.

1)Slide the upper areas from top to down to choose color wheel from one to one. (P29,P30)





Or fast press twice to enter the color wheel selection interface to choose color wheel(P31)

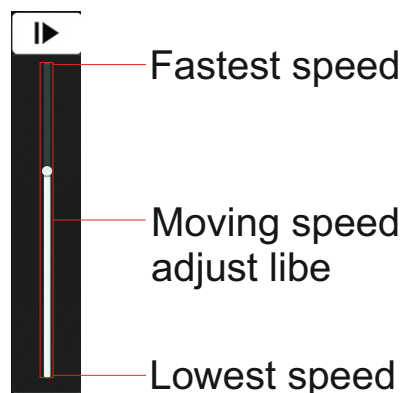
P31

c. pause&run button(P32)

Running button exist in RGB, CDW color wheel interface, they are similar so here will take RGB as an example to explain.



▶ Running & Pause button



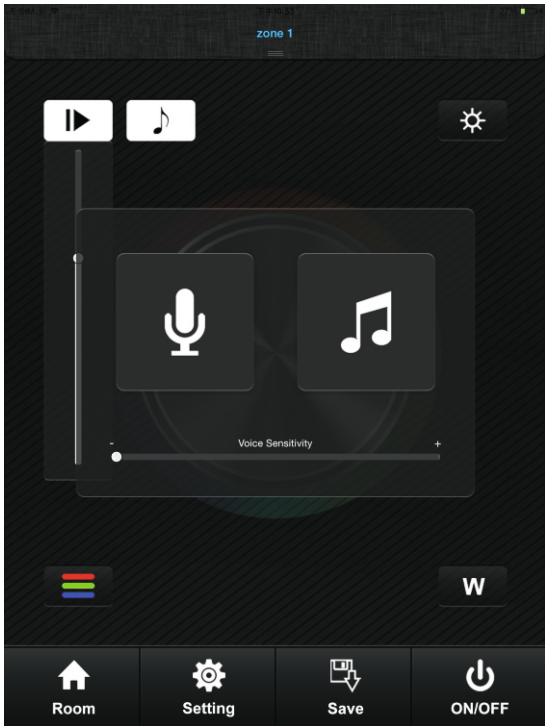
P32

Attention

Press pause&run button ▶ , mode will run. Press it once, it runs one mode. Press button again, it stops, then press one more time, it will enter next mode. There are total 10 build-in modes. If we pressed color after we pause the running, the running mode will back form first one.

Long press the pause&run button ▶ , LED lighting will flash twice, the color running in different zones will be switched from Synchronize moving to color chasing & color chasing to Synchronize running.

d. music



P33



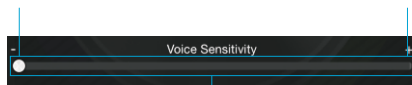
LED lighting will move according the voice decibel nearby. Bigger decibel, faster speed. LED lighting will back to adjusted speed when no voice effect.




LED lighting will move according the level of music voice. Bigger decibel, faster speed. LED lighting will back to adjusted speed when no voice effect.

The highest, a low voice will affect the moving speed lowest

The lowest, need a high voice affect moving speed.



Voice Sensitivity

When choose  it will open your local music palyer(P34,P35)

e. RGB/CDW brightness level line

This button exist in RGB/CDW interface, they are similar, so here will take RGB as an example to explain.



P36

1) Short press the button 

2) Brightness level can be adjusted from 0-255 to an accurate color.

Attention

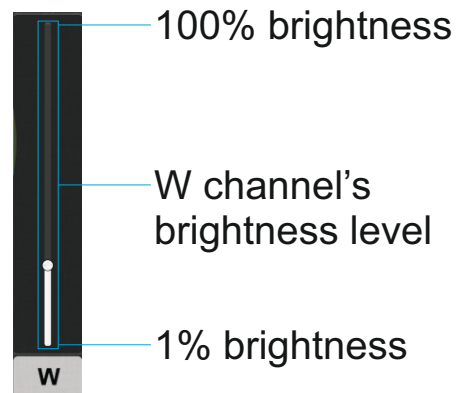
Before adjust the color by color line, LED might in already in an existing color, so we need zero clearing each channel first: moving each channel in any level between 1-225, then move it back to zero, then RGB lighting will off which means zero clearing successfully.

f. W button

This button only exists in RGB channels color wheel interface to adjust W channel brightness independently.



P37



Long press W button **w** to ON/OFF W channel independently.

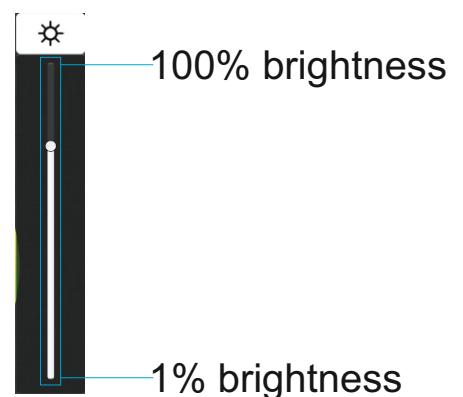
g. Brightness button

Brightness button exist in RGB, CDW and CCT color wheel interface.



P38

In RGB color wheel interface, it only adjusts R, G and B three channels brightness, and cannot adjust W channel. We need use W button **w** to adjust W channel brightness independently.



In CDW and CCT color wheel interface, it adjusts all channels brightness.

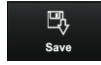
h. Save button

1. Save

1) Select rooms/zones

2) Select color or moving modes

3) Short press save button



4) Long press any button of

S1	S2	S3	S4
S5	S6	S7	S8

 (S2 for example)

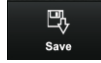


5) LED lighting will flash indicate save successfully.

2. Recall

1) Select rooms/zones

2) Short press save button



3) short press saved button in

S1	S2	S3	S4
S5	S6	S7	S8

 (S2 for example)



4) LED will indicate saved color or moving modes