



## JOLT BAR FX2

**With added features over its predecessor, the Jolt Bar FX2 is a highly flexible fixture that can be used to create a wide variety of effects ideal for concert productions, festival stages and rental houses, as well as for permanent installation in large nightclubs.**



The ADJ Jolt Bar FX2 features a central strip of 112 x 5-Watt cool white SMD LEDs, surrounded on both sides by a total of 448 x .5-Watt RGB color mixing SMD LEDs. This allows the same fixture to generate intense white strobing as well as colored washes and strobe effects. Both types of LED are grouped into independently controllable zones (16 white and 32 color), which means the unit can also be used to generate strobe chases and other 'eye candy' effects.

Building on the success of the original Jolt Bar FX, the new Jolt Bar FX2 features upgrades that will help Lighting Designers add a new level of creativity to their light shows. Aria X2 is built-in to each fixture (Aria X2 is our proprietary Wireless Management System) which allows for data distribution, fixture set up and over the air updates to occur wirelessly. The fixture is supplied with a frost lens assembly that easily attaches to the front of the unit to change its look and output. The frost blurs the pixel dots providing designers another creative way to change the effect from project to project. And, each fixture is also supplied with a connecting plate that allows multiple units to be joined together seamlessly.

With a wide 117-degree beam angle and immense light output, the Jolt Bar FX2 is ideally suited to large concert and festival stages, as well as dance events and big nightclub installations. It is supplied with a pair of versatile 180-degree variable hanging brackets, which can also be used as floor stands, and is designed such that multiple units can be positioned side by side to create continuous zone chase effects. For strobe effects, the unit offers variable speed between 0.35Hz and 25Hz and its LED refresh rate can also be adjusted between 900 and 25kHz.

The fixture offers a choice of 17 different DMX modes (6, 9, 13, 16, 18, 20, 32, 34, 38, 43, 64, 78, 80, 112 and 127 channels), allowing flexibility depending on the level of control required and the number of channels available. To aid with quick and eye-catching programming, the unit is also supplied with 25 built-in RGB LED program macros and 9 built-in white LED program macros. An intuitive 4 touch button LCD menu display on the rear of the unit facilitates easy DMX addressing as well as configuration of the various operating modes.

Measuring 1m in length (39.4"), the fixture is compact in its other dimensions (4.07"/103.5mm and 3.98"/101mm). It has a robust metal construction yet has been carefully engineered to keep its weight to a minimum (13 lbs. / 5.9kg.) making it ideal for concert touring and event production applications. It is fitted with locking power input and output sockets, allowing multiple fixtures to be connected from a single power outlet, which are positioned on either side of the fixture – together with the 5-pin DMX input and output sockets – to allow convenient setup and neat cable run.

## LIGHT SOURCE:

- 448 x 0.5-Watt RGB SMD LEDs + 112 x 5-Watt Cool White SMD LEDs
- 76.6° Beam Angle (Full On) (See Full Photometric Reports in Downloads Section)
- 92° Field Angle (Full On) (See Full Photometric Reports in Downloads Section)
- RGB LEDs: Red: 620-630nm; Green: 515-530nm; Blue: 460-470nm;
- White LEDs CCT: Typical 7400K (Min 6900 - Max 8000), 472nm
- CRI: 86
- 50,000 Hour Average LED Life



## FEATURES:

- 32 x RGB LED Zones
- 16 x Cool White LED Zones
- 25 Built-in RGB LED Program Macros
- 9 Built-in Cool White LED Program Macros
- 180-Degree Mounting bracket System
- Aria X2 Wireless Management System Built-in
- Optional Frost Lens Assembly (to blur pixel dots)
- Includes Connecting Plate (for seamless fixture linking)

## CONTROL:

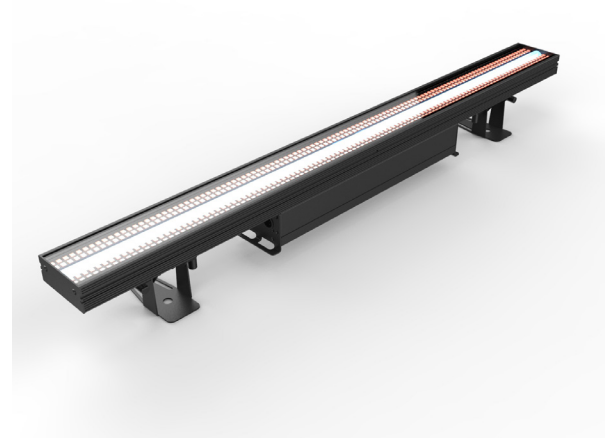
- Control Protocols: DMX, Aria X2 and RDM
- 17 DMX Channel Modes: 6, 9, 13, 16, 18, 20, 32, 34, 38, 43, 45, 64, 78, 80, 112, 127 and 129
- Dim Modes: 6 Presets (Standard, Stage, TV, Architectural, Theatre & Stage 2)
- Dim Curves: 4 Presets (Linear, Square Law, Inv Square Law and S Curve)
- 0-100% Smooth Dimming
- Strobe: Ramp Up / Down, Lighting and Random
- Max Strobe Rate 25Hz; Min Strobe Rate: 0.35Hz
- Refresh Rate: 900Hz - 25kHz
- With Wired Digital Communication Network
- Display: OLED Menu (with 4 touch buttons)

## CONNECTIONS:

- Data: Indoor Locking 5-pin DMX In/Out
- Power: Indoor Locking Power In/Out

## ELECTRICAL:

- 100-240V 50Hz/60Hz (Auto Sensing)
- Max Power Consumption: 214W @120V., 208W @230V.
- Max Power Link: 6pcs @120V., 12pcs @230V.+
- Fuse Protected: T5A/250V Glass Fuse (5\*20MM)



# JOLT BAR FX2



## DIMENSIONS / WEIGHT:

- Length: 4.07" (103.5mm)
- Width: 39.4" (1000mm)
- Height: 3.98" (101mm)
- Weight: 13 lbs. (5.9 kg)

## WHAT'S INCLUDED:

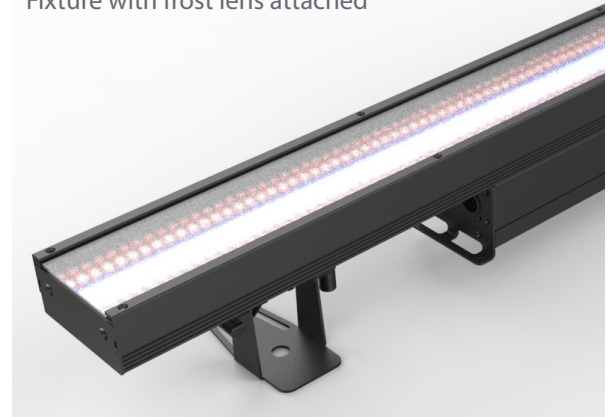
- 1x Indoor, 6ft (1.83m) Power Locking to Edison Power Cable (U.S.)
- 1x Frost Filter
- 2x Omega Compatible Brackets (Omega Clamps sold separately)

## APPROVALS / RATINGS:

- CE
- cETLus Approved (Control # 4010765)
- IP20



Fixture with frost lens attached



Removable frost lens

